



WWW.SLOANSG.COM/DESIGN

Learn More

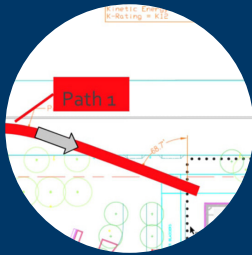


# Design and Engineering



## ENGINEERING CAPABILITIES

# Predict, Prevent, and Protect.



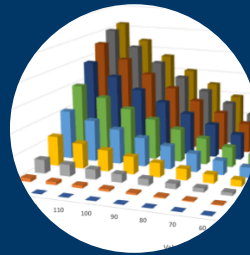
### Perimeter Vehicle Vector Analysis

Vector analysis determines the minimum crash rating required at each location and can inform product selections.



### Building Info Modeling (BIM)

BIM assists in predicting potential construction hazards, while validating the safety of the final security design.



### Risk Assessment and Modeling

Risk assessments and risk modeling can improve safety and reduce costs associated with accidents and attacks.



### Ballistic Attack Sightline Analysis

Sight-line software uses drones and 3D digital mapping to predict key attack points that can inform the final design.

## DESIGN GUIDELINES

# We Have High Standards.

Sloan has worked with many security standards and requirements from the Army Corps of Engineers, ASTM, NERC, and more.



FEMA



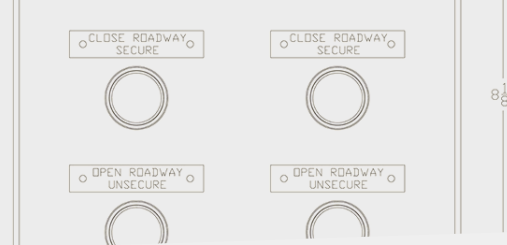
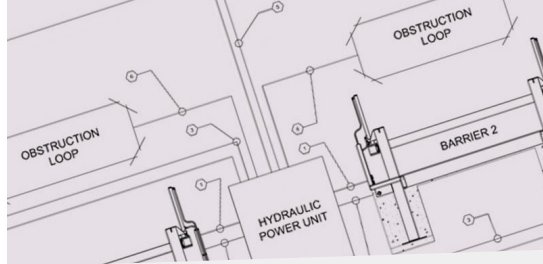
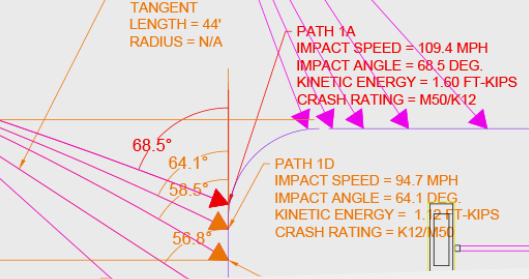
CYBERSECURITY  
& INFRASTRUCTURE  
SECURITY AGENCY



NERC  
NORTH AMERICAN ELECTRIC  
RELIABILITY CORPORATION



Natural  
Environment  
Research Council



## DESIGN TEAM EXPERTISE

# We'll Solve Your Most Difficult Design Challenges.

Sloan's diverse experience installing and repairing security equipment for over 30 years has enabled them to deliver some of the safest and most effective designs in the world.



**Collaborative  
Design-Build  
Security Team**



**2D/3D Renderings  
and Construction  
Documentation**



**Crime Prevention  
Through Environmental  
Design (CPTED)**



**Access Control  
System Design  
& Design-Assist**

## WHO WE SERVE

# Industries



Corporate



Data Centers



Energy



Government



Industrial



Infrastructure



Ports



Stadiums

## TRUSTED BY TOP BRANDS

# Our Clients

Google

Meta

UBER

Microsoft

amazon

BILL & MELINDA  
GATES foundation

Los Alamos  
NATIONAL LABORATORY  
EST. 1943

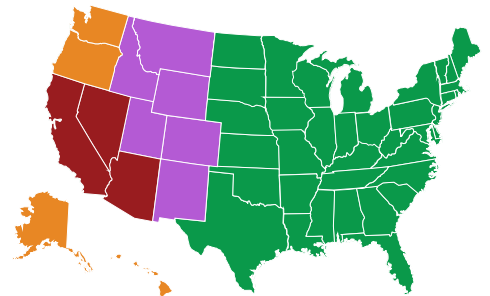
ExxonMobil

CHASE

VISA

## OUR TEAM

# Get in Touch



**Jeff Starck**  
NORTHWEST  
jeff.starck@sloansg.com  
(206) 561-5728



**Matt Lowe**  
ROCKY MOUNTAIN  
matt.lowe@sloansg.com  
(208) 899-0482



**Gur Singh**  
SOUTHWEST  
gurpreet.singh@sloansg.com  
(408) 497-1502



**Collin Sloan**  
USA & INTERNATIONAL  
collin.sloan@sloansg.com  
(208) 412-7943

**CORPORATE OFFICE** 6828 W. MELROSE ST., BOISE, IDAHO 83709 • TEL +1-888-382-8379

BOISE • SAN JOSE • SEATTLE • SALT LAKE CITY • LAS VEGAS • LOS ANGELES • DENVER • WASHINGTON DC