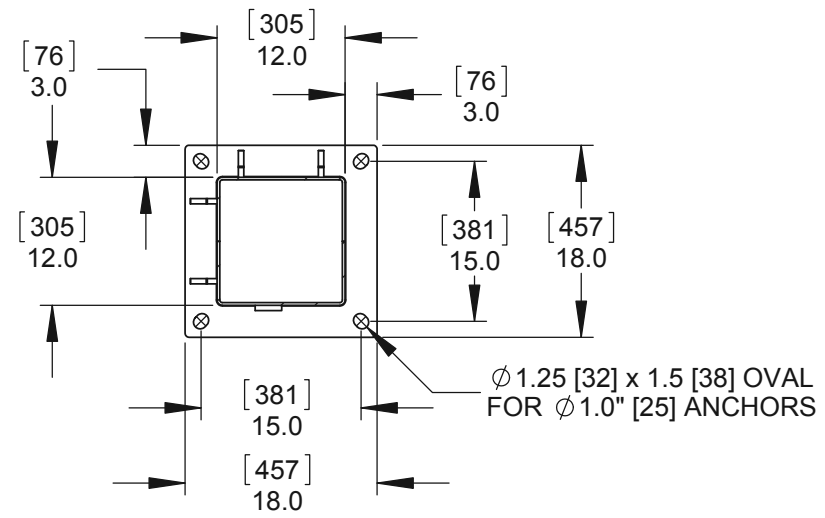


**SECTION B-B - COLUMN BASE PLATE**

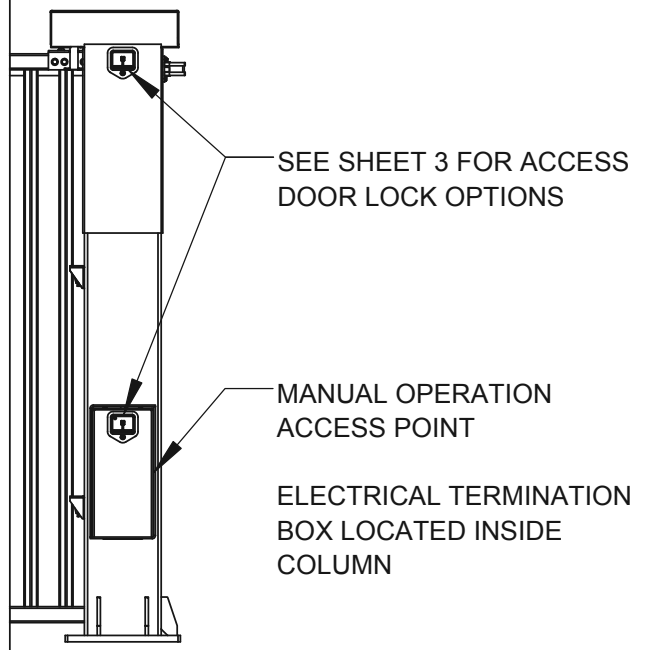


**GATE HEIGHTS**

6' [1.8M]	72.0" [1829]	
7' [2.1M]	84.0" [2134]	***
8' [2.4M]	96.0" [2438]	
9' [2.7M]	108.0" [2743]	***
10' [3.0M]	120.0" [3048]	

\*\*\* 7' [2.1M] & 9' [2.7M] HEIGHTS AVAILABLE BY REQUEST

**SECTION A-A**



**NOTE:**  
THE PRIMARY COLUMN IS THE COLUMN THAT IS LOCATED CLOSEST TO THE CONTROL ENCLOSURE

PHOTOCELLS ARE LOCATED ON INTERIOR FACE OF COLUMNS

12.0 [305] x 12.0 [305] x .25 [6] COLUMN  
18.0 [457] x 18.0 [457] x 1.0 [25] BASE PLATE

2 ELECTRICAL CONTROLLERS ARE MOUNTED IN A 30.0 [762] x 30.0 [762] x 12.0 [305] NEMA 3R ENCLOSURE c/w WIRE HARNESS.

STANDARD WIRE HARNESS LENGTH ALLOWS FOR CONTROLLER ENCLOSURE TO BE PLACED UP TO 30' [9144] FROM PRIMARY COLUMN.

OPTIONAL EXTENDED WIRE HARNESS IS AVAILABLE WHERE CONTROLLERS ARE TO BE MOUNTED BEYOND STANDARD WIRE HARNESS LENGTH. MAXIMUM WIRE HARNESS LENGTH IS DETERMINED BY DRIVE THRU WIDTH, CONTACT SLOAN SECURITY GROUP FOR DETAILS.

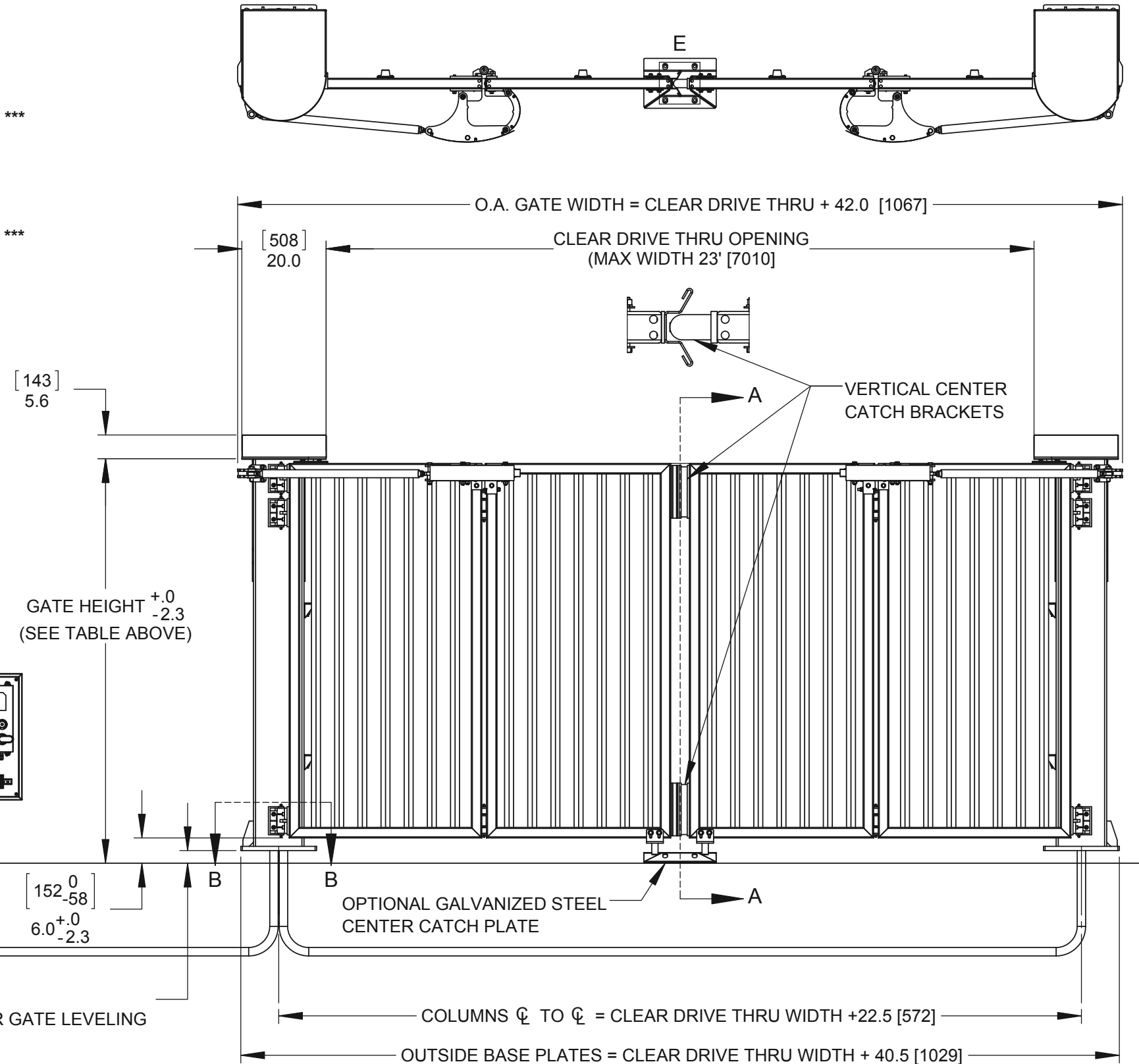
CONTROLLERS, ENCLOSURE AND WIRE HARNESS BY SLOAN SECURITY GROUP CONDUIT, BY OTHERS. SEE SHEET 2 FOR CONDUIT SIZES, QUANTITIES AND REQUIREMENTS.

**POWER REQUIREMENTS: 240V, SINGLE PHASE, 20A**

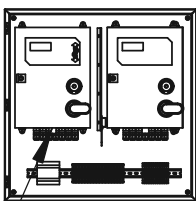
**FINISH NOTES:**

STANDARD FINISH: HOT DIPPED GALVANIZED ON ALL STEEL COMPONENTS  
OPTIONAL POWDER COAT PAINT FINISH AVAILABLE.

**NOTE:** DIMENSIONS ARE SHOWN IN INCHES, DIMENSIONS SHOWN IN [ ] ARE IN MILLIMETERS



GATE HEIGHT  $+0$   
 $-2.3$   
(SEE TABLE ABOVE)



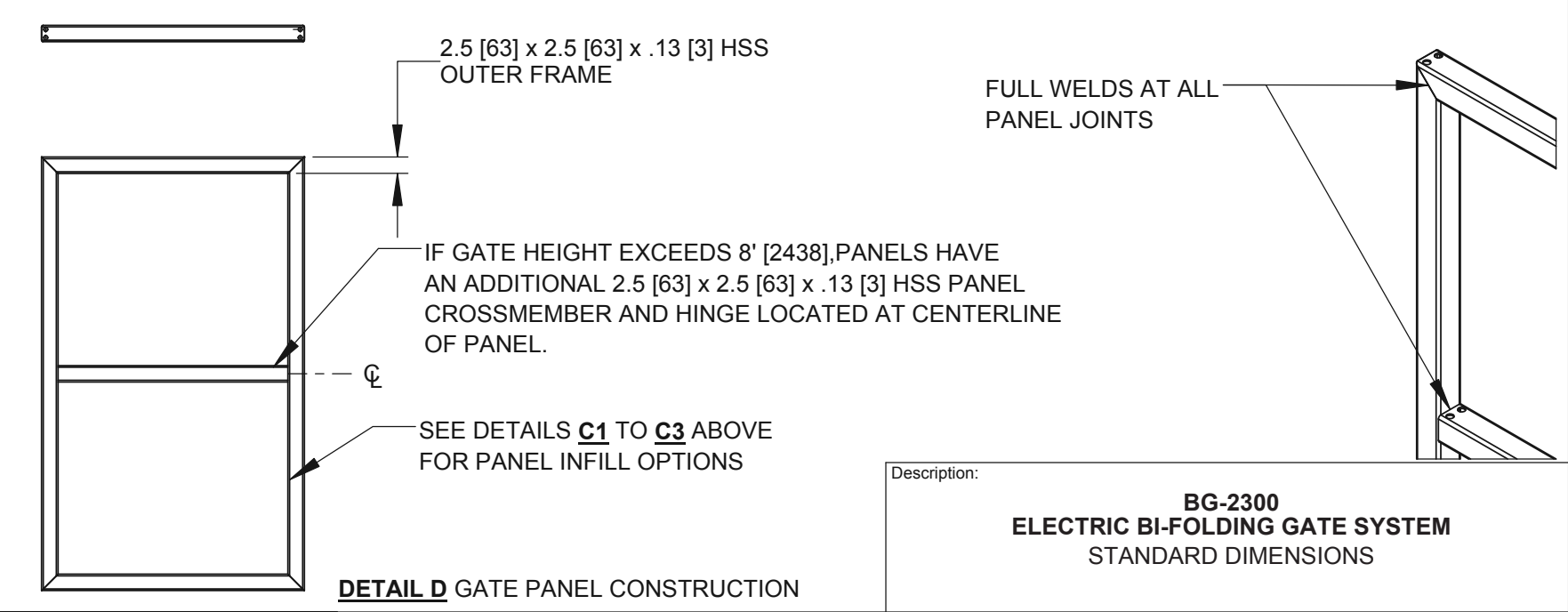
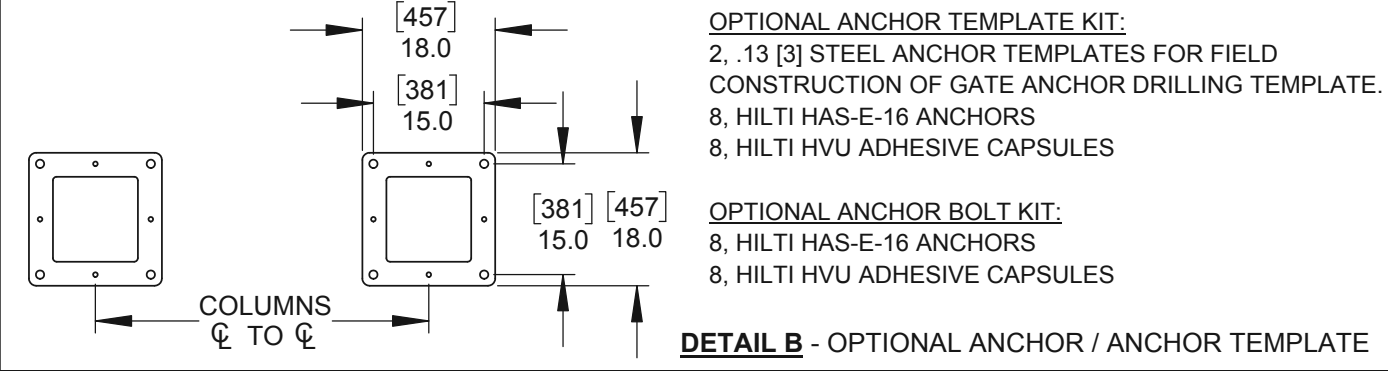
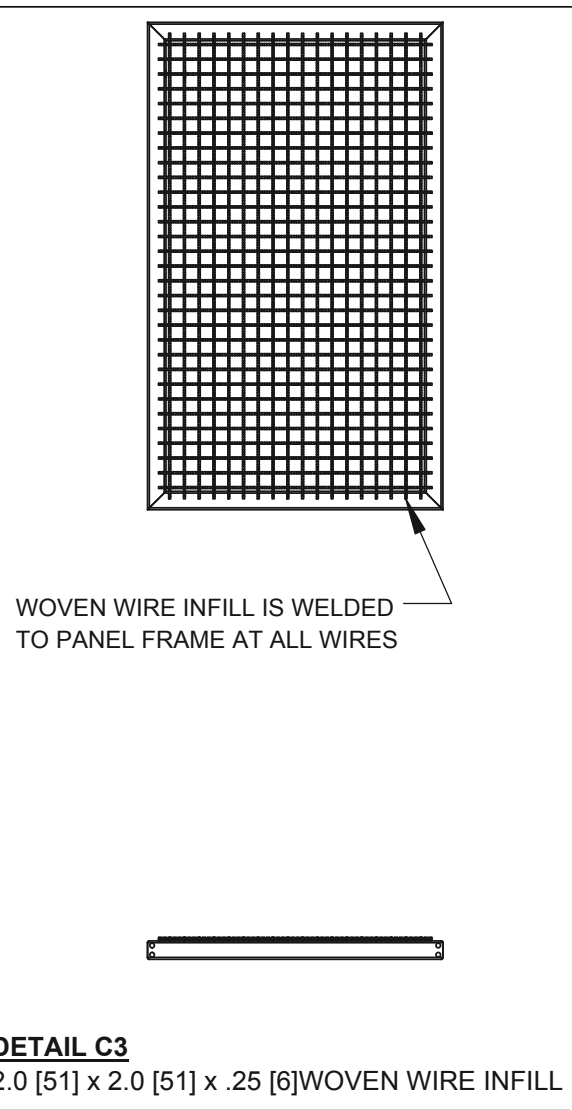
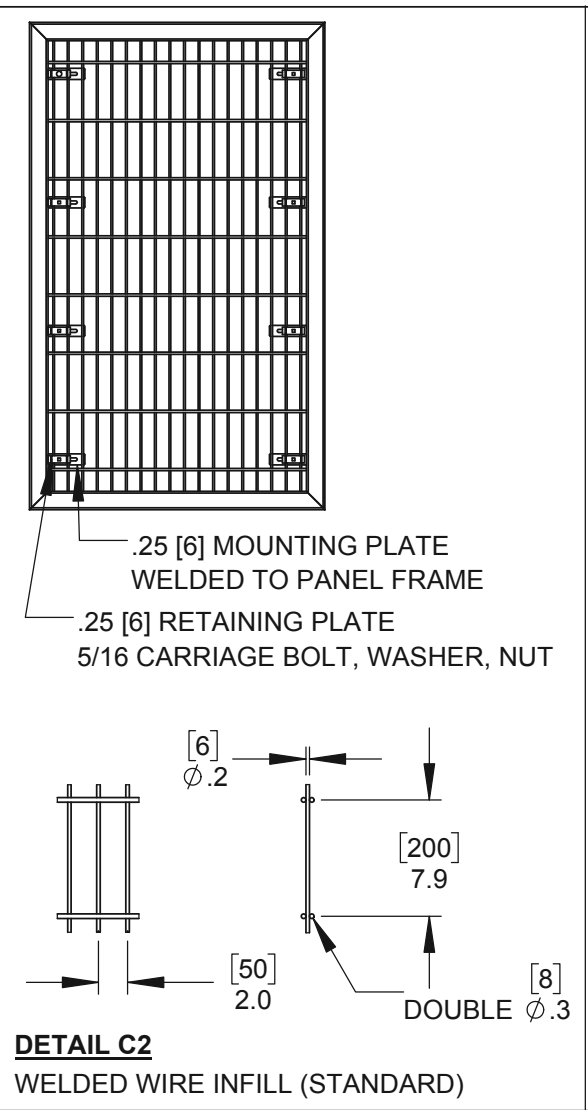
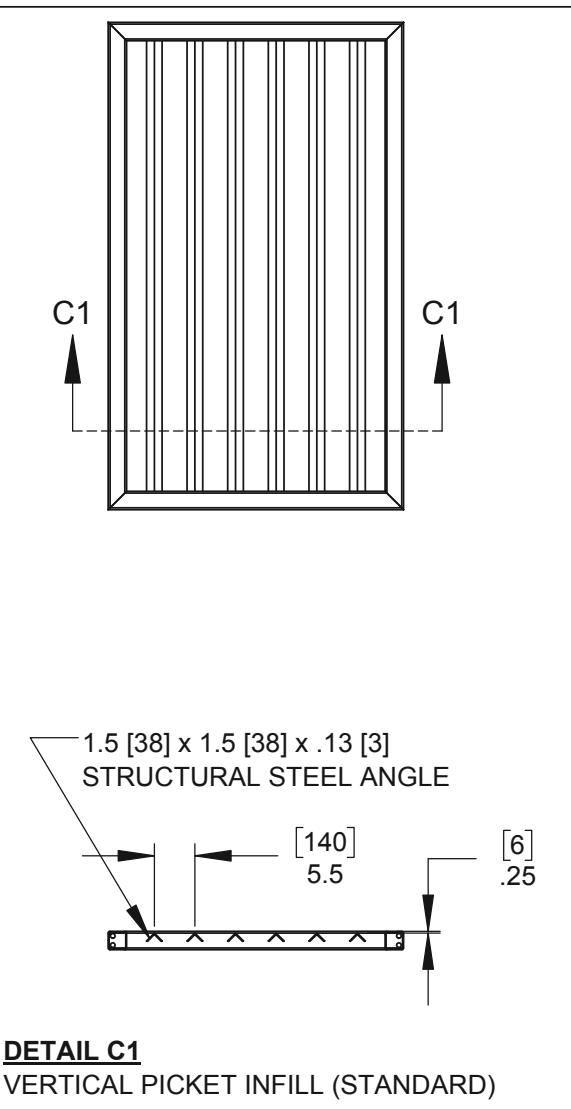
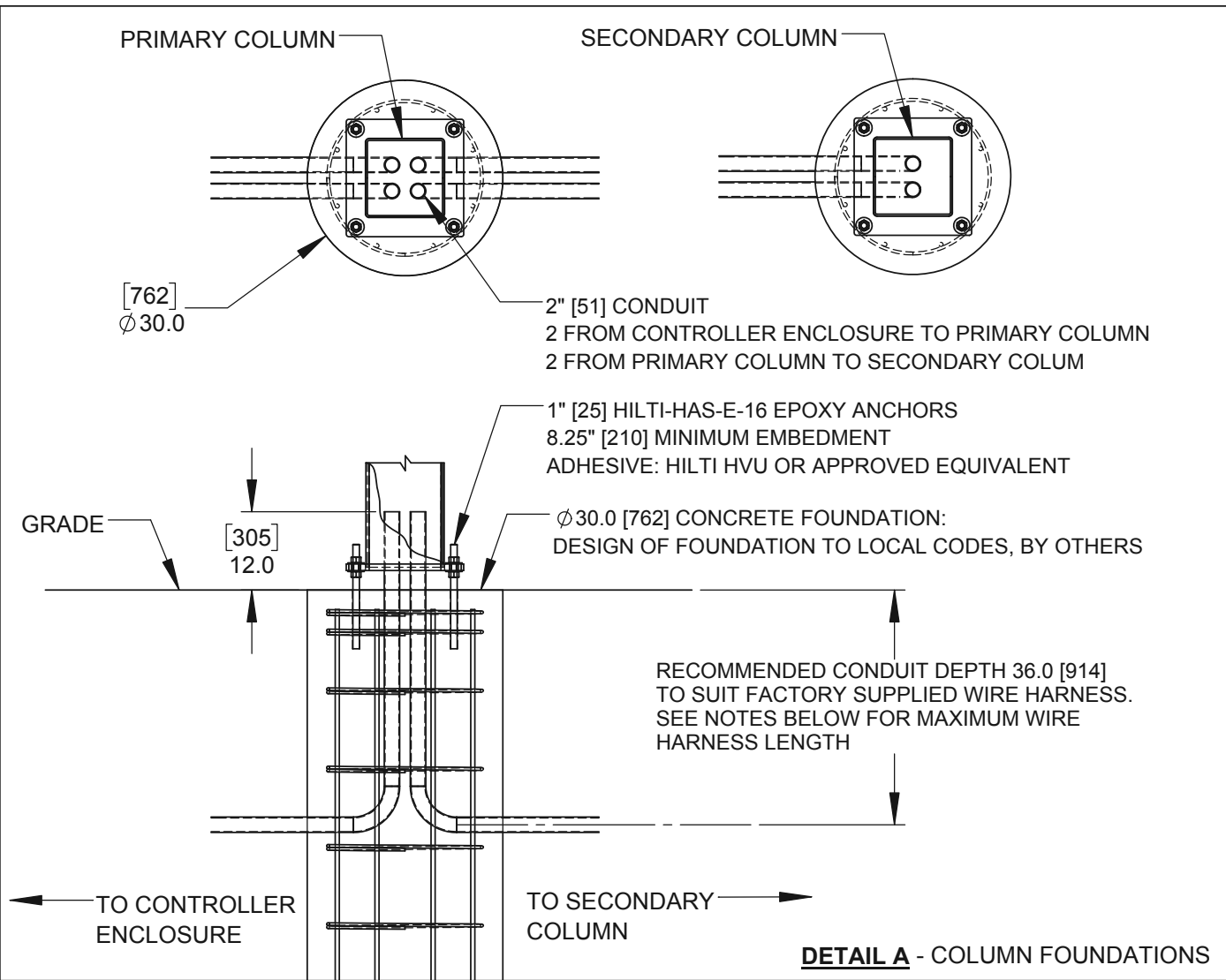
152.0<sup>0</sup><sub>-58</sub>  
6.0<sup>+0</sup><sub>-2.3</sub>  
76.0<sup>0</sup><sub>-58</sub>  
3.0<sup>+0</sup><sub>-2.3</sub> FOR GATE LEVELING

Description:  
**BG-2300  
ELECTRIC BI-FOLDING GATE SYSTEM  
STANDARD DIMENSIONS**

Customer / Project Name:	
Finish:	Date: 5/18/2022
Drawing No.	Rev.
Sheet: 1 of 7	



6828 W Melrose St.  
Boise, ID 83709  
Phone: 1-800-275-5998  
Email: info@sloansg.com  
Web: www.sloansg.com




**INCLUDED WITH SPEEDGATE:**

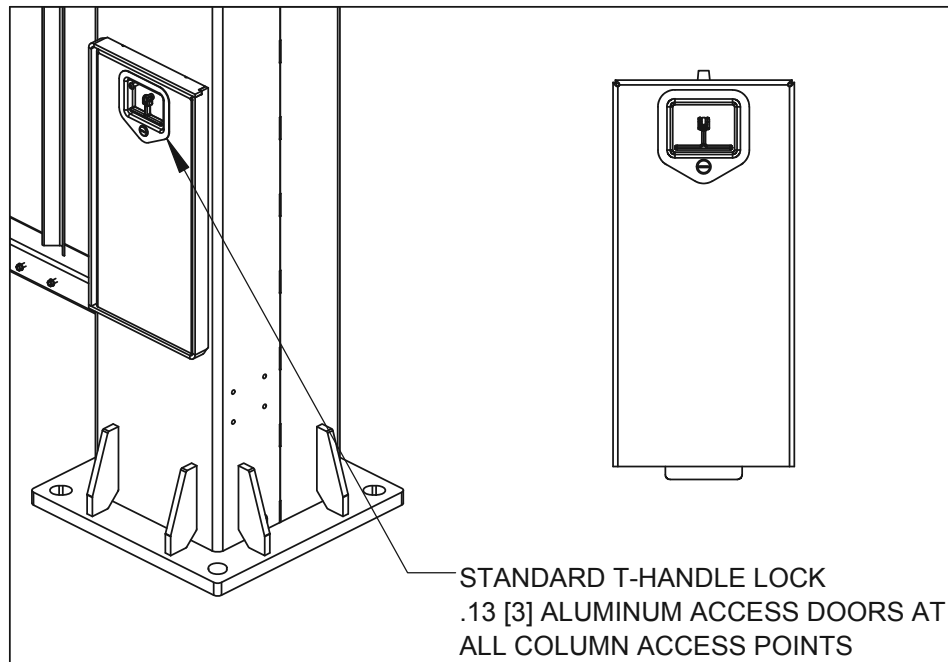
- 2 ELECTRONIC GATE CONTROLLERS MOUNTED IN A 30" [762] x 30" [762] x 12" [305] NEMA 3R ENCLOSURE.
- ELECTRICAL HARNESS TO CONNECT GATE CONTROLLERS TO DRIVE COMPONENTS. STANDARD WIRING HARNESS LENGTH ALLOWS FOR THE CONTROL ENCLOSURE TO BE MOUNTED UP TO 30' [9144] FROM PRIMARY COLUMN. OPTIONAL EXTENDED WIRING HARNESS IS AVAILABLE. CONTACT SLOAN SECURITY GROUP FOR DETAILS.
- KEY(S) AND LOCK(S) FOR ALL ACCESS PANELS, SEE SHEET 3, DETAILS E1 TO E4 FOR AVAILABLE LOCK OPTIONS.

**NOT INCLUDED WITH SPEEDGATE:**

- GATE MOUNTING HARDWARE, OPTIONAL ANCHOR BOLT OR ANCHOR BOLT & TEMPLATE KITS AVAILABLE.
- VEHICLE DETECTION LOOPS
- GROUT TO FILL GAP UNDER COLUMN BASE PLATES WHEN GATE INSTALLATION / LEVELING IS COMPLETE

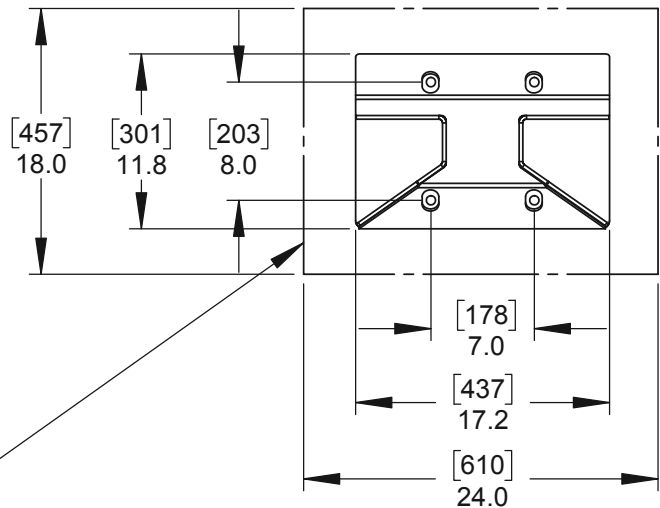
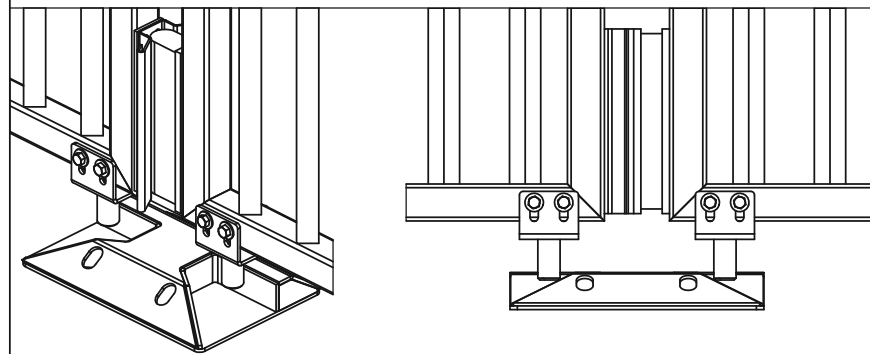
 6828 W Melrose St.  
Boise, ID 83709  
Phone: 1-800-275-5998  
Email: info@sloansg.com  
Web: www.sloansg.com

Description: <b>BG-2300 ELECTRIC BI-FOLDING GATE SYSTEM STANDARD DIMENSIONS</b>		
Customer / Project Name:		
Finish:	Date:	5/18/2022
Drawing No.	Rev. <b>A</b>	Sheet: <b>2</b> of <b>7</b>



STANDARD T-HANDLE LOCK  
.13 [3] ALUMINUM ACCESS DOORS AT ALL COLUMN ACCESS POINTS

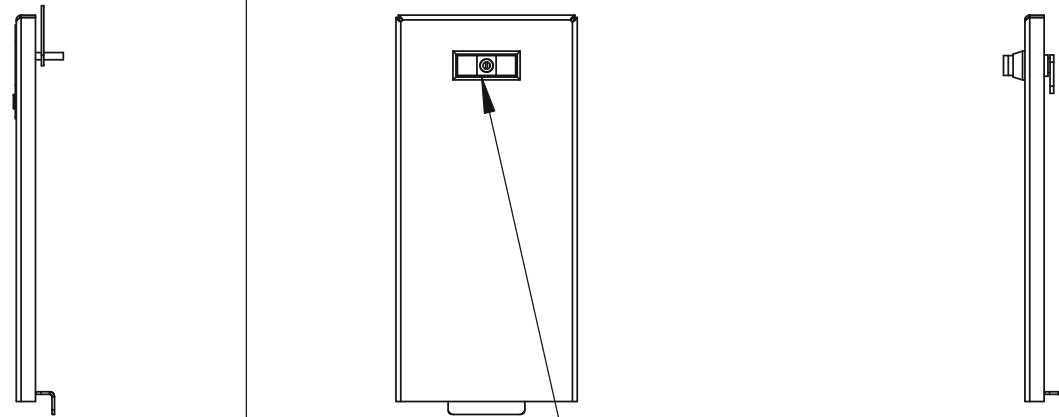
**DETAIL E1**  
STANDARD T-HANDLE ACCESS POINT LOCK



CENTER CATCH PLATE MUST BE ANCHORED TO A SUITABLE ROADWAY SURFACE. IF ROADWAY IS NOT SUITABLE FOR ANCHORING, A 24.0" [610] x 18.0 [457] PAD MUST BE INSTALLED.

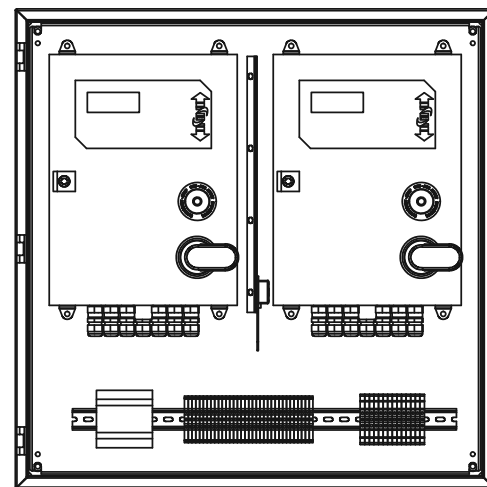
CENTER CATCH PLATE IS SUPPLIED WITH 4, 1/2" [13] x 5" [127] WEDGE ANCHORS.

**DETAIL G** OPTIONAL CENTER CATCH PLATE



SPRING LOADED "POP LOCK" WITH ABLOY KEY  
.13 [3] ALUMINUM ACCESS DOORS AT ALL COLUMN ACCESS POINTS

**DETAIL E2**  
OPTIONAL HIGH SECURITY LOCK

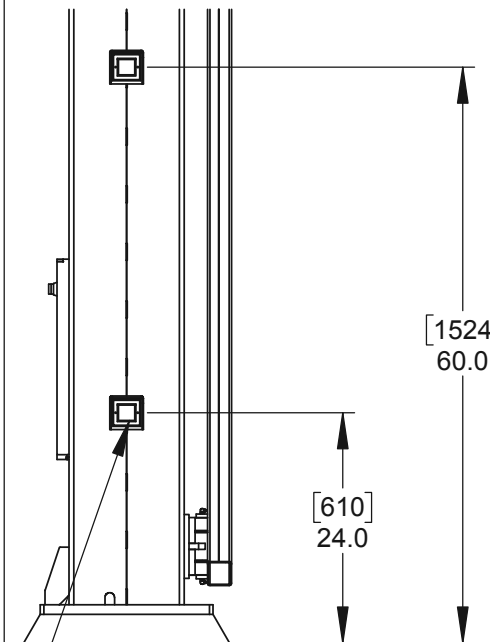


THE NEMA 3R CONTROLLER ENCLOSURE CAN BE FITTED WITH OPTIONAL HEATING OR COOLING KITS TO ACCOMMODATE A WIDE RANGE OF TEMPERATURES.

**OPTIONAL HOT WEATHER KIT INCLUDES:**  
EXHAUST FAN, VENT GRILLES, RAIN SHROUDS AND THERMOSTAT.

**OPTIONAL COLD WEATHER KIT INCLUDES:**  
320 WATT SELF-REGULATING HEATER, THERMAL COVER. THERMAL COVER IS ONLY AVAILABLE IF CONTROLLER ENCLOSURE IS FREE STANDING.

**DETAIL H** ENVIRONMENTAL CONTROLS

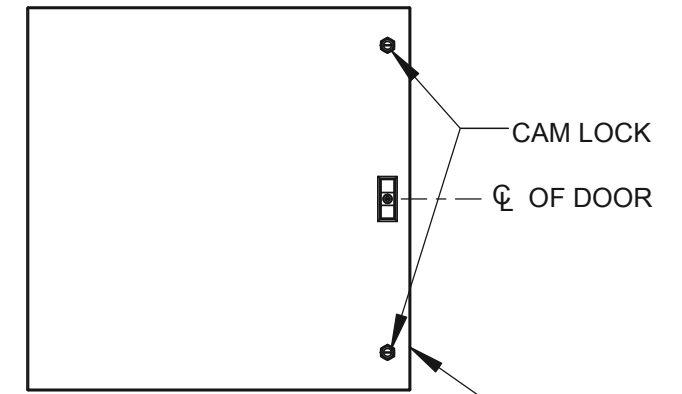


ALL GATES ARE SUPPLIED WITH 2 SETS OF PHOTOCELLS LOCATED AT 24" [610] & 60" [1524] ABOVE GRADE

**DETAIL I** PHOTOCELLS



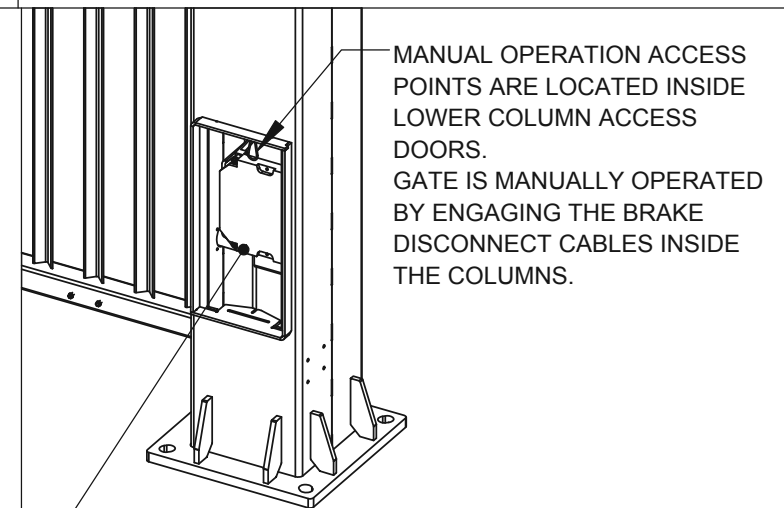
6828 W Melrose St.  
Boise, ID 83709  
Phone: 1-800-275-5998  
Email: info@sloansg.com  
Web: www.sloansg.com



30" [762] x 30" [762] x 12" [305]  
CONTROLLER ENCLOSURE

**STANDARD:**  
CAM LOCK (x2)  
**OPTION 1:**  
HIGH SECURITY, POP LOCK @ CL OF DOOR  
**OPTION 1:**  
DETENTION GRADE, PARACENTRIC LOCK @ CL OF DOOR

**DETAIL F** CONTROLLER ENCLOSURE LOCK



MANUAL OPERATION ACCESS POINTS ARE LOCATED INSIDE LOWER COLUMN ACCESS DOORS. GATE IS MANUALLY OPERATED BY ENGAGING THE BRAKE DISCONNECT CABLES INSIDE THE COLUMNS.

COLUMN ELECTRICAL TERMINATION BOX IS LOCATED INSIDE LOWER ACCESS DOOR OF PRIMARY COLUMN. PRIMARY COLUMN IS THE COLUMN LOCATED CLOSEST TO THE CONTROLLER ENCLOSURE

**DETAIL J** MANUAL OPERATION ACCESS POINT / COLUMN ELECTRICAL TERMINATION

Description:  
**BG-2300  
ELECTRIC BI-FOLDING GATE SYSTEM  
OPTIONS**

Customer / Project Name:

Finish:

Date:

5/18/2022

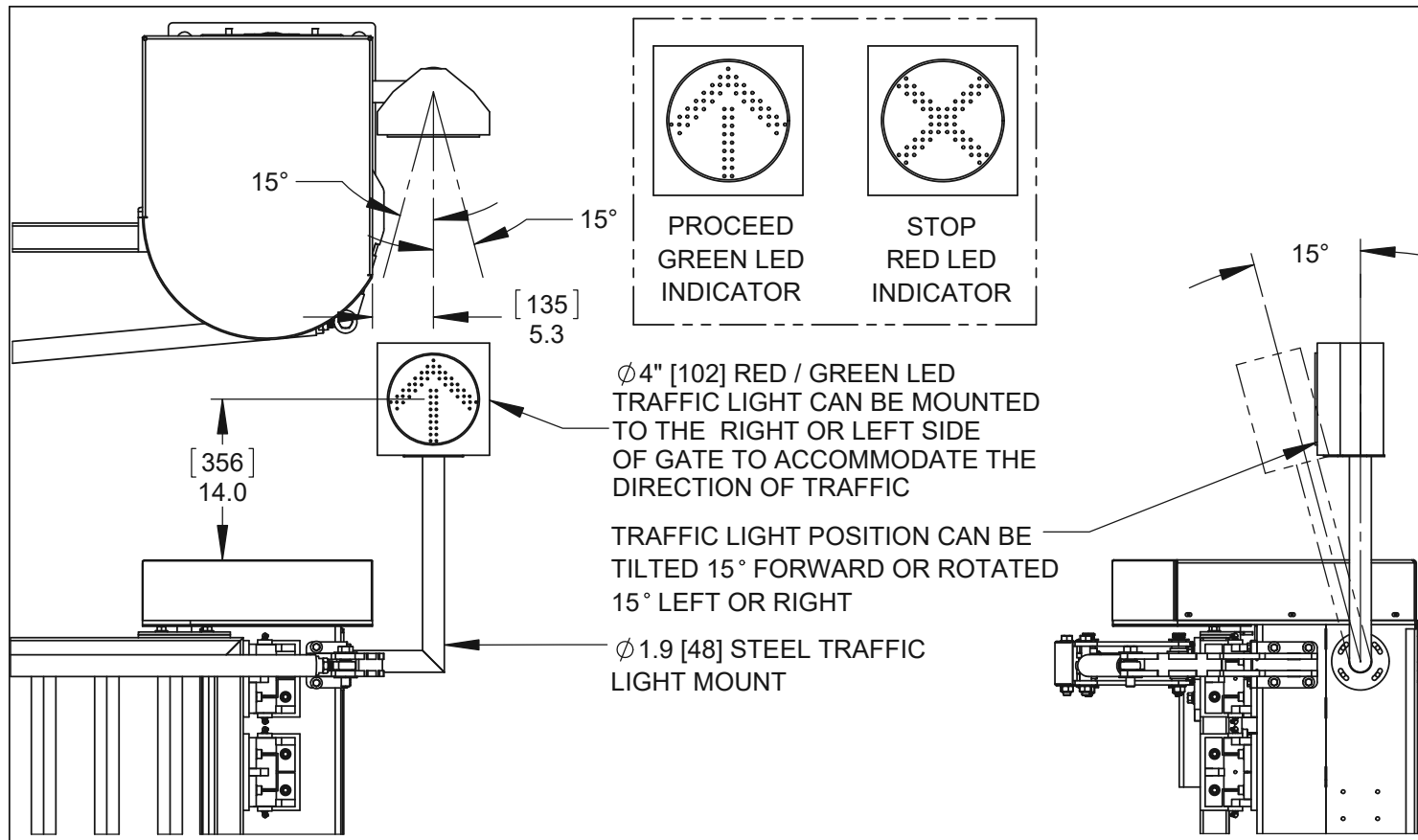
Drawing No.

Rev.

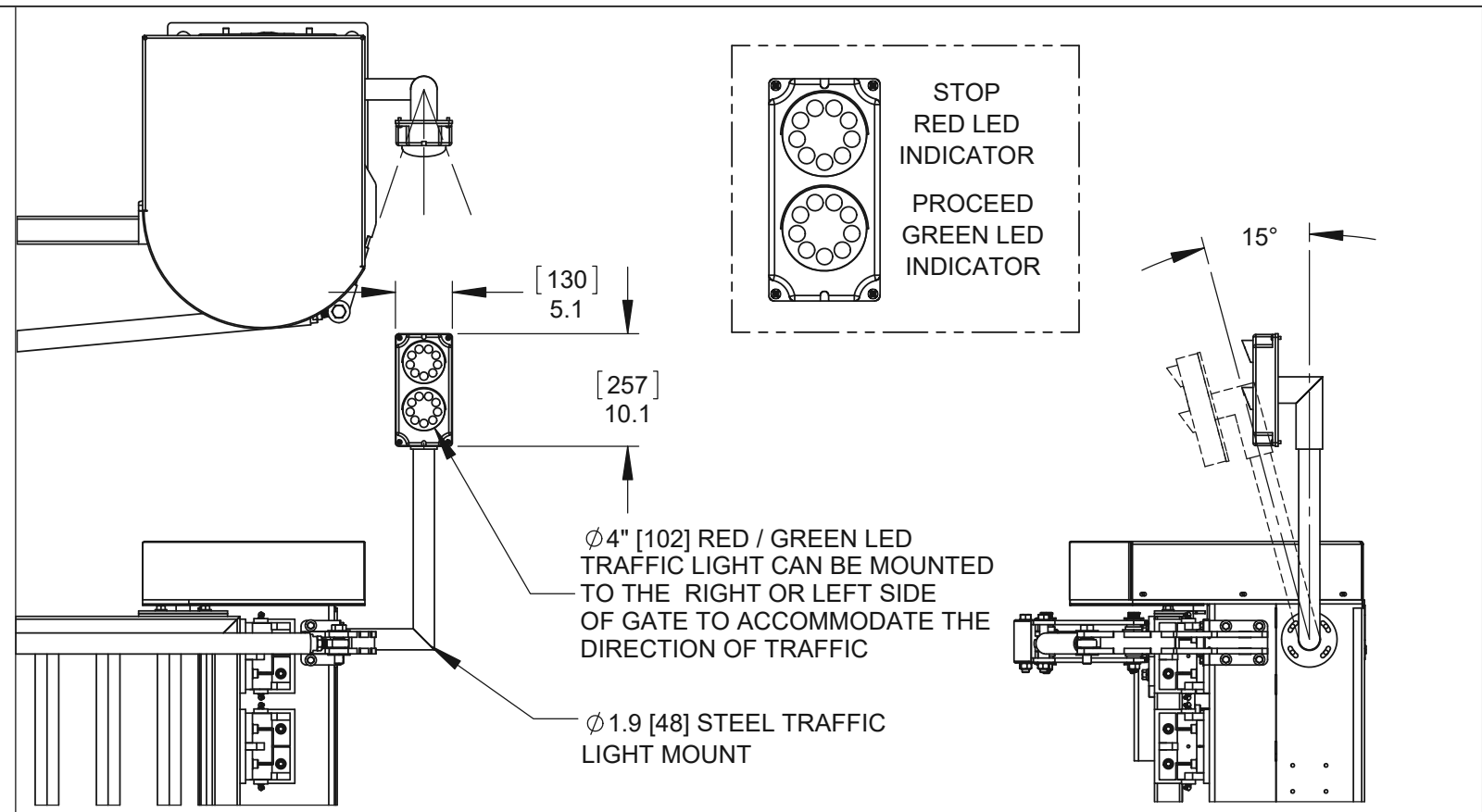
**A**

Sheet:

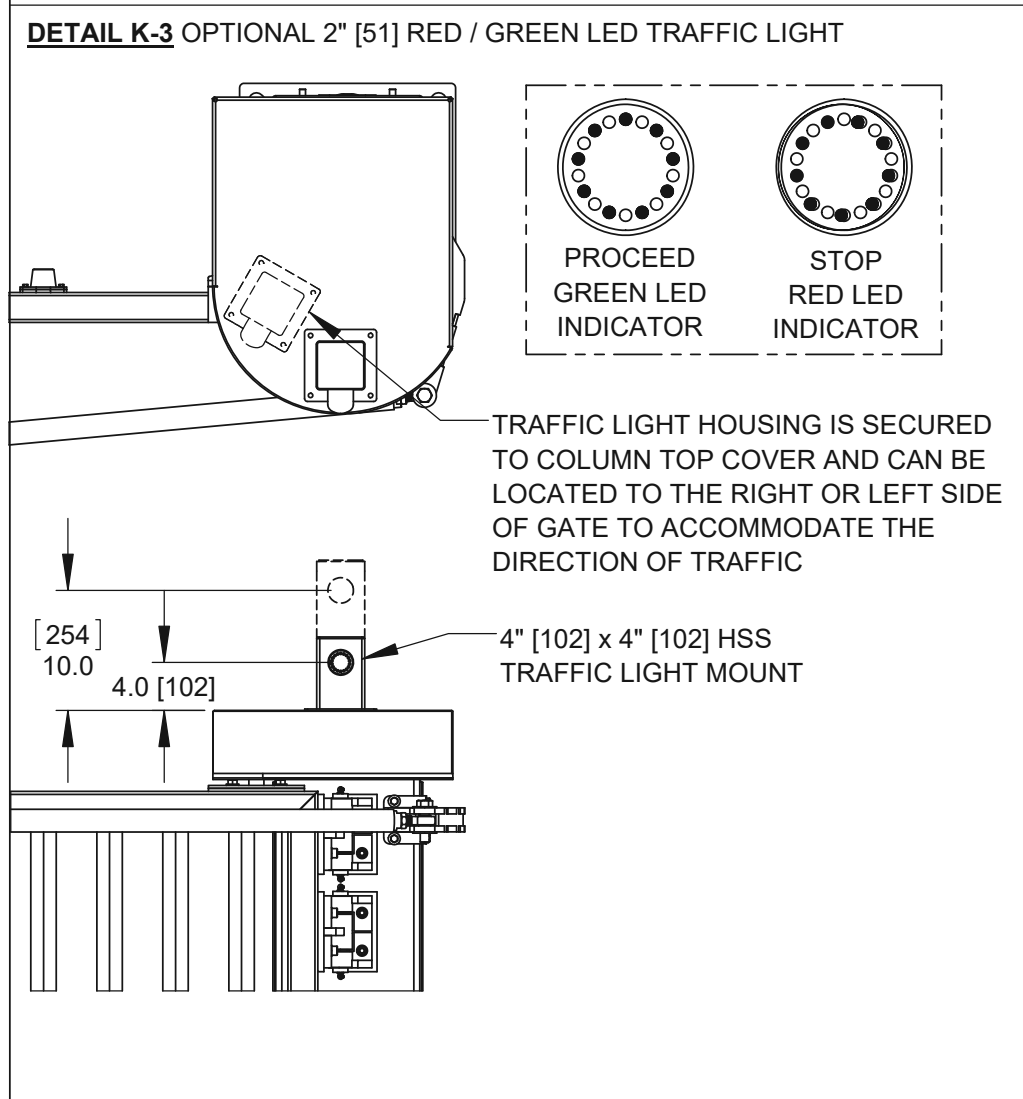
**3** of **7**



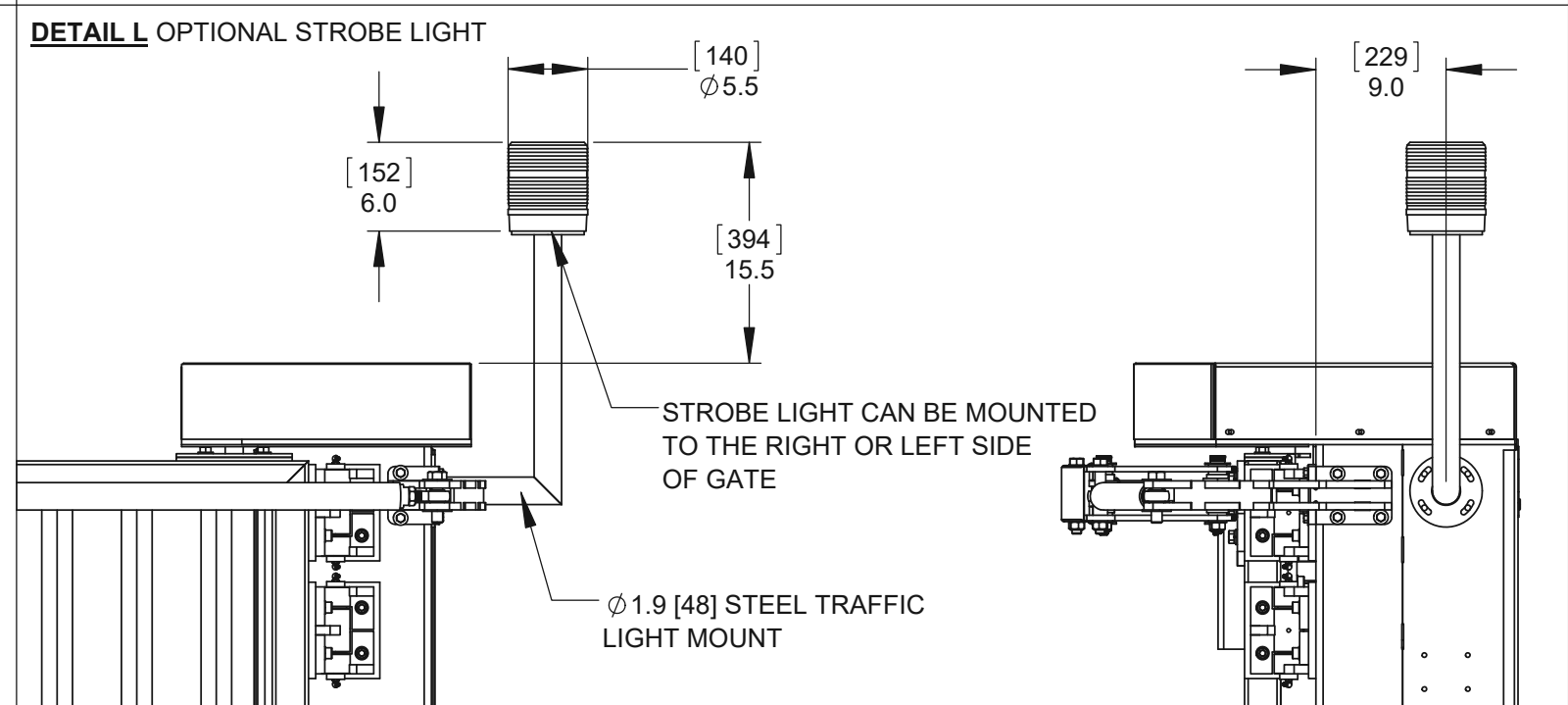
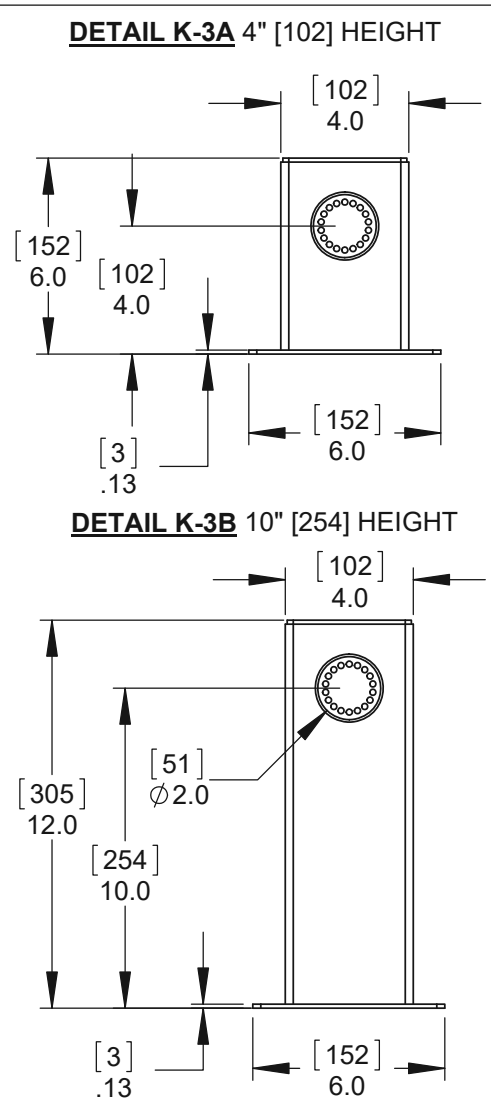
**DETAIL K-1** OPTIONAL 8" [203] RED / GREEN LED TRAFFIC LIGHT



**DETAIL K-2** OPTIONAL 4" [102] RED / GREEN LED TRAFFIC LIGHT



**DETAIL K-3** OPTIONAL 2" [51] RED / GREEN LED TRAFFIC LIGHT



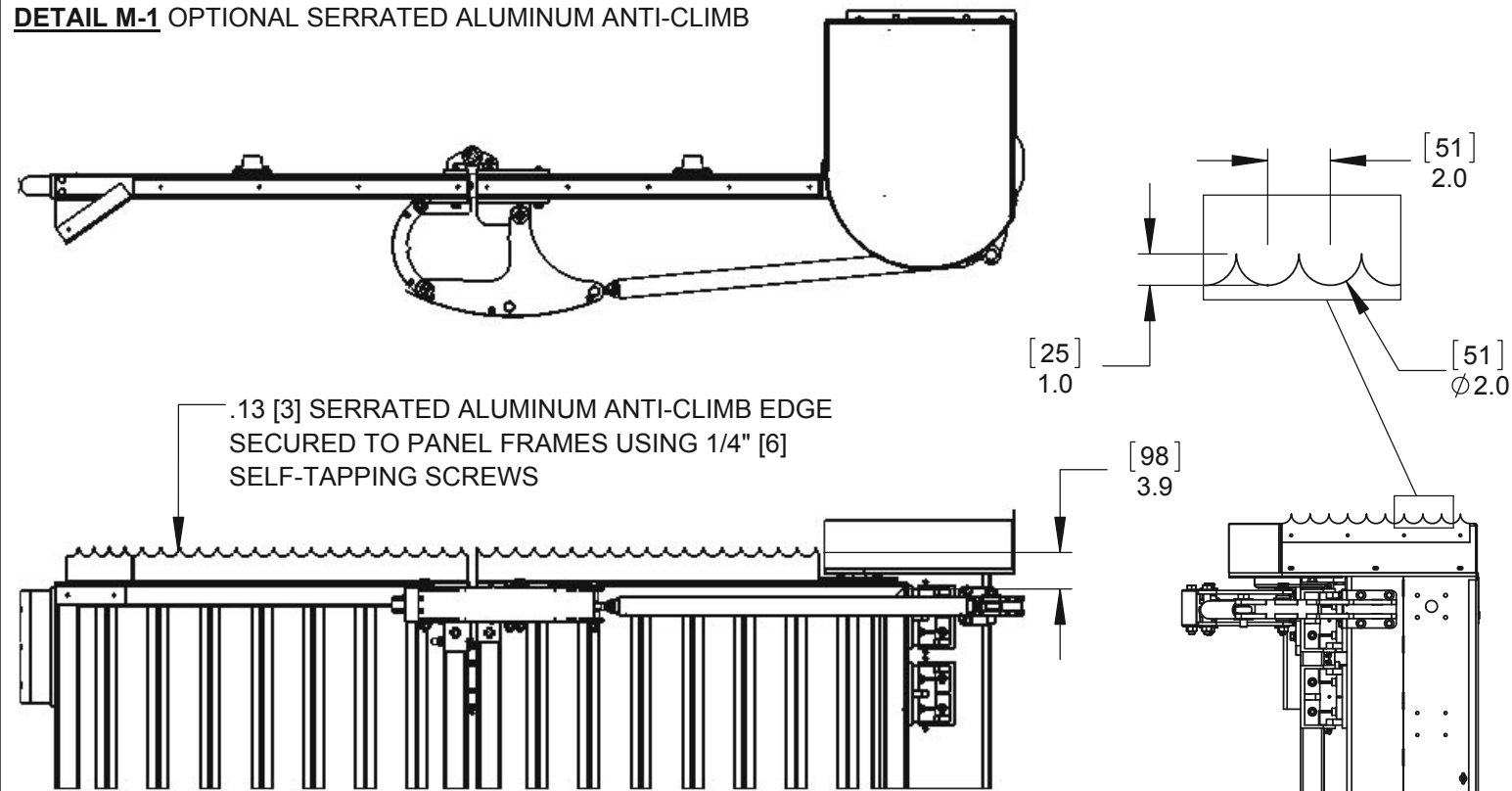
**DETAIL L** OPTIONAL STROBE LIGHT

Description:		
<b>BG-2300 ELECTRIC BI-FOLDING GATE SYSTEM OPTIONS</b>		
Customer / Project Name:		
Finish:	Date:	
		5/18/2022
Drawing No.	Rev.	Sheet:
		4 of 7

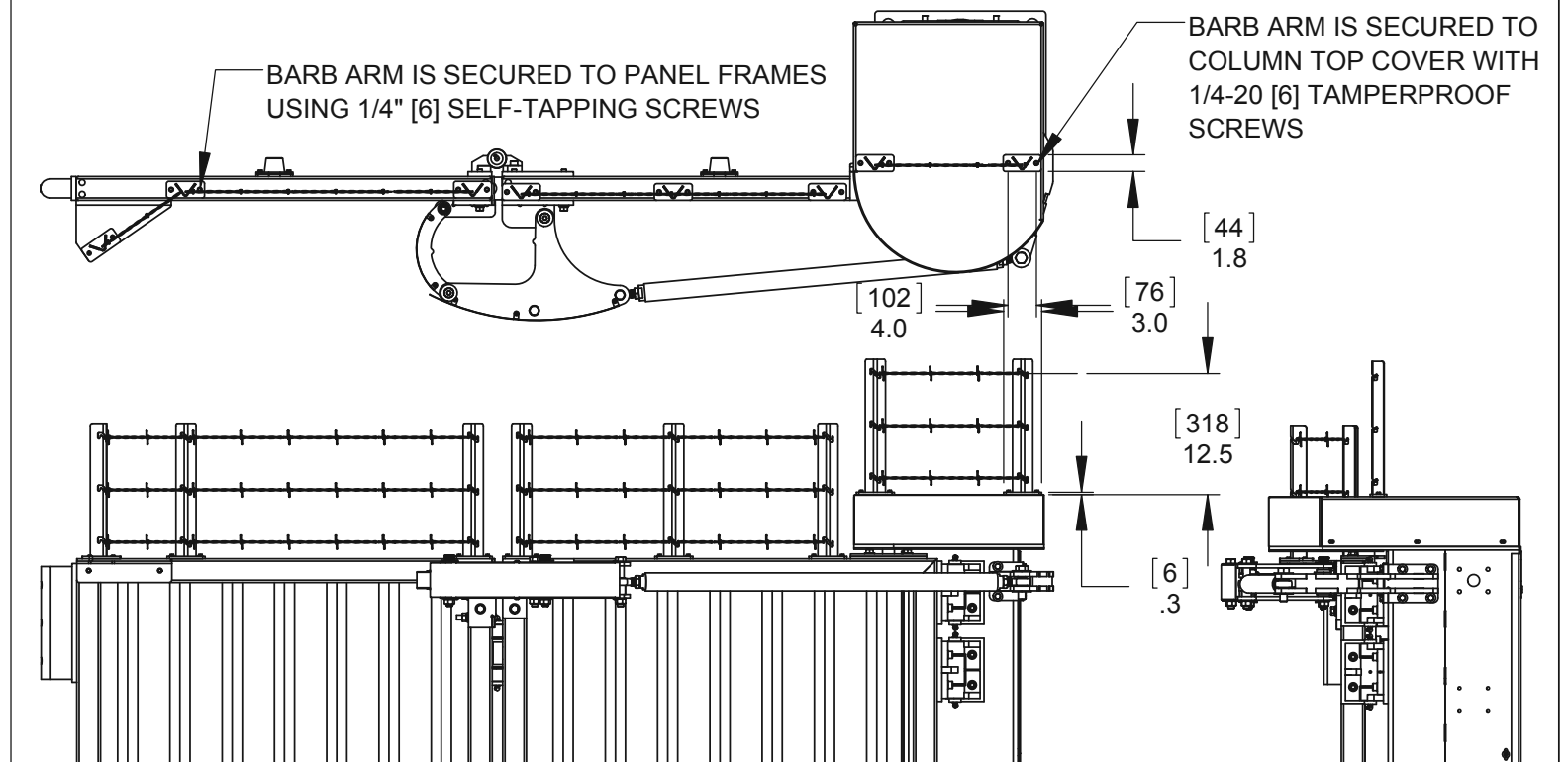


6828 W Melrose St.  
Boise, ID 83709  
Phone: 1-800-275-5998  
Email: info@sloansg.com  
Web: www.sloansg.com

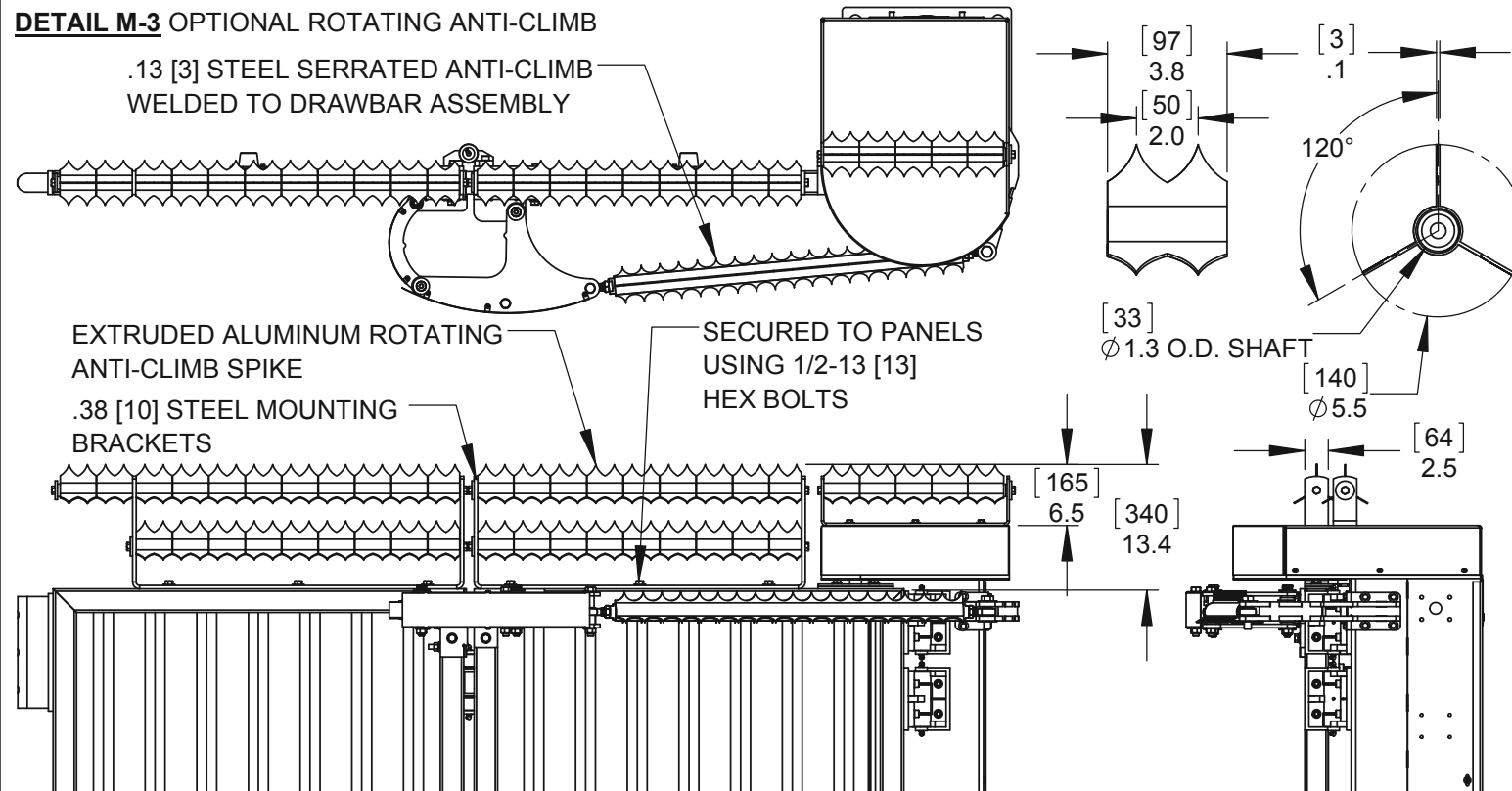
**DETAIL M-1** OPTIONAL SERRATED ALUMINUM ANTI-CLIMB



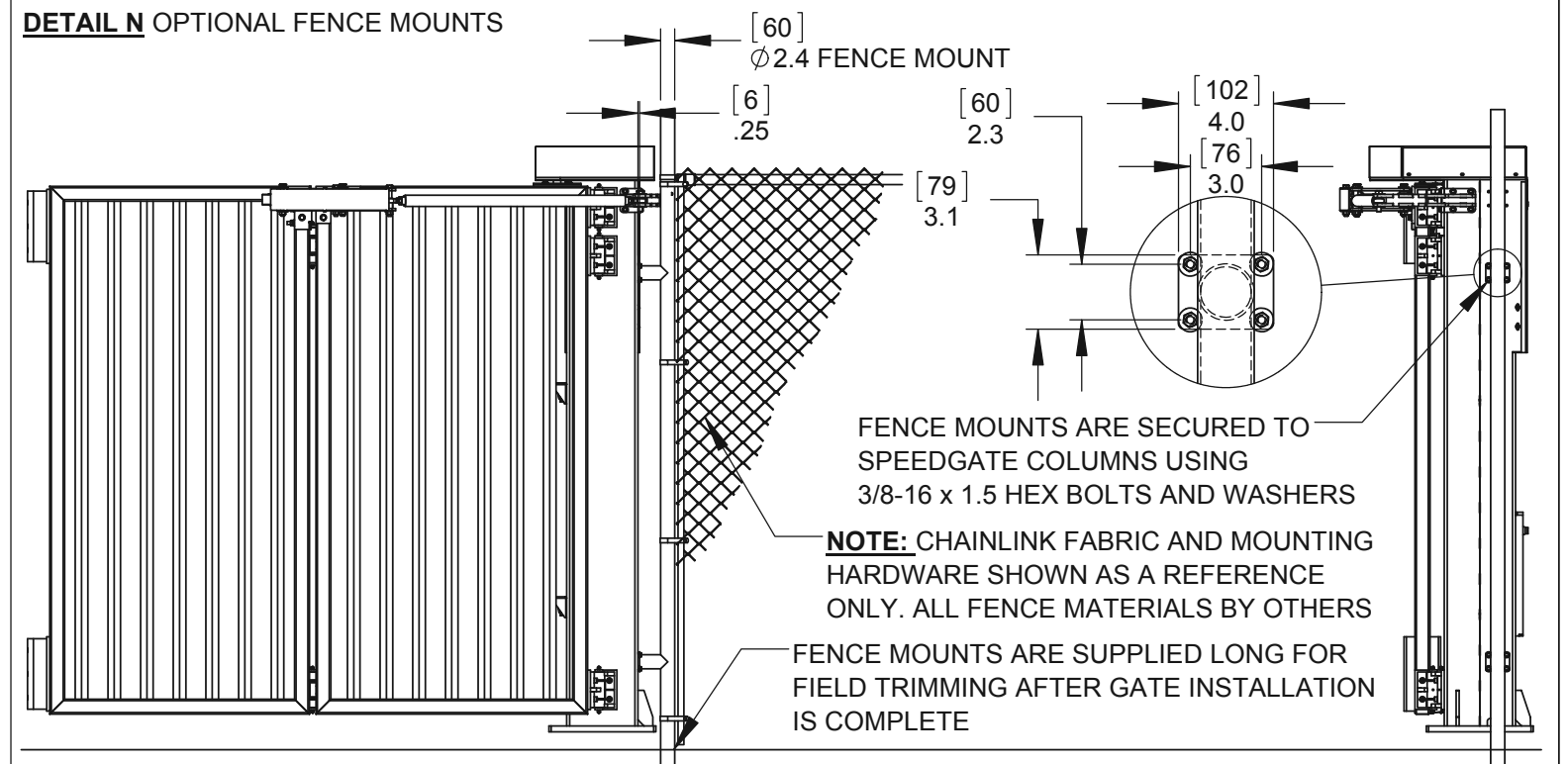
**DETAIL M-2** BARBED WIRE ANTI-CLIMB



**DETAIL M-3** OPTIONAL ROTATING ANTI-CLIMB



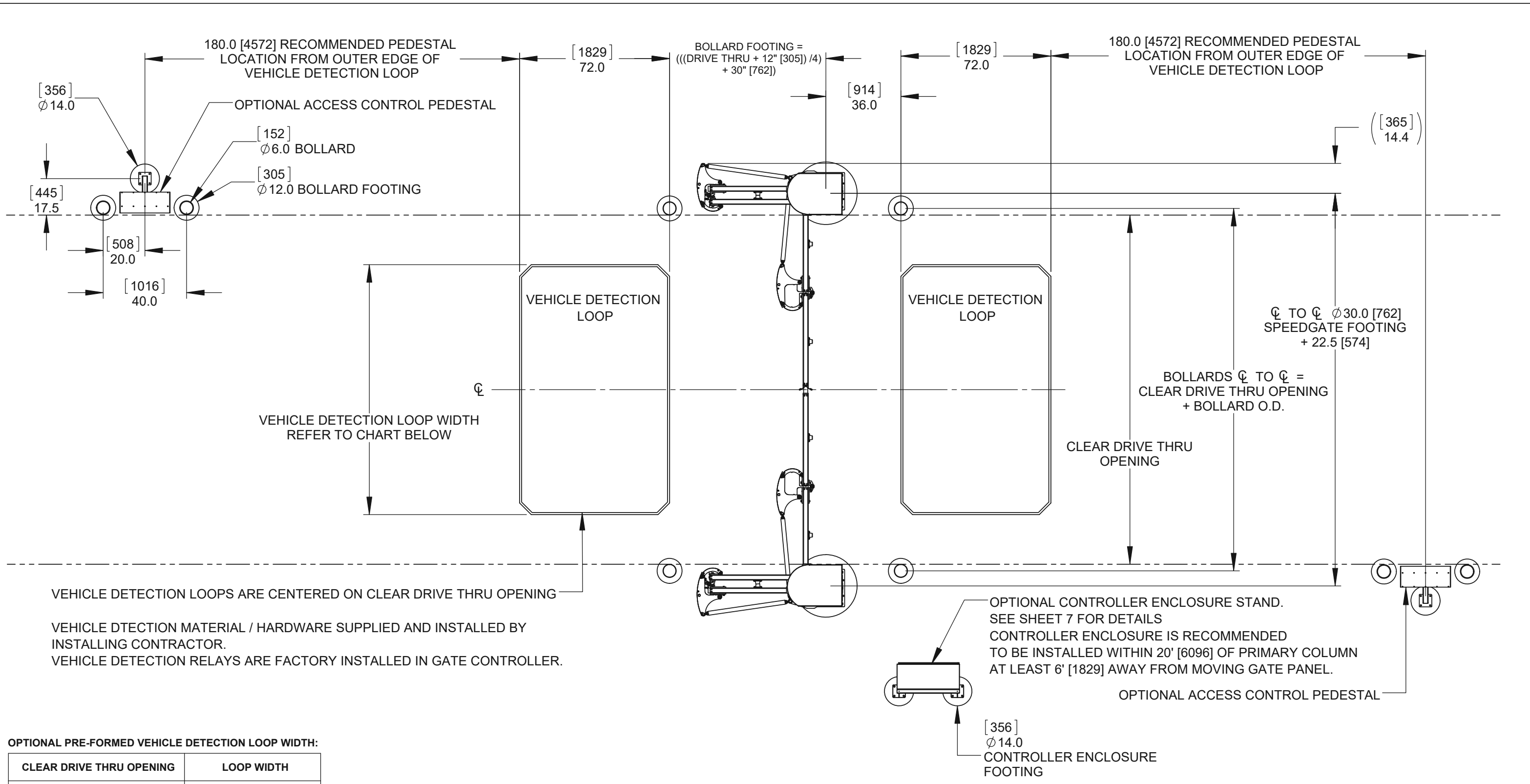
**DETAIL N** OPTIONAL FENCE MOUNTS



Description:		<b>BG-2300 ELECTRIC BI-FOLDING GATE SYSTEM OPTIONS</b>	
Customer / Project Name:			
Finish:	Date:		5/18/2022
Drawing No.	Rev.	Sheet: 5 of 7	



6828 W Melrose St.  
Boise, ID 83709  
Phone: 1-800-275-5998  
Email: info@sloansg.com  
Web: www.sloansg.com



**OPTIONAL PRE-FORMED VEHICLE DETECTION LOOP WIDTH:**

CLEAR DRIVE THRU OPENING	LOOP WIDTH
10' [3048]	6' [1829]
12' [3658]	8' [2438]
14' [4267]	10' [3048]
16' [4877]	12' [3658]
18' [5486]	14' [4267]
20' [6096]	16' [4877]
23' [7010]	20' [6096]

**NOTE:**  
 BOLLARD FOUNDATION LOCATIONS ARE SUPPLIED AS A REFERENCE ONLY.  
 ALL FINAL MATERIALS AND DIMENSIONS ARE SUPPLIED AND INSTALLED BY OTHERS.

Description:  
**BG-2300**  
**ELECTRIC BI-FOLDING GATE SYSTEM**  
 FOOTINGS / VEHICLE DETECTION LOOP LOCATIONS

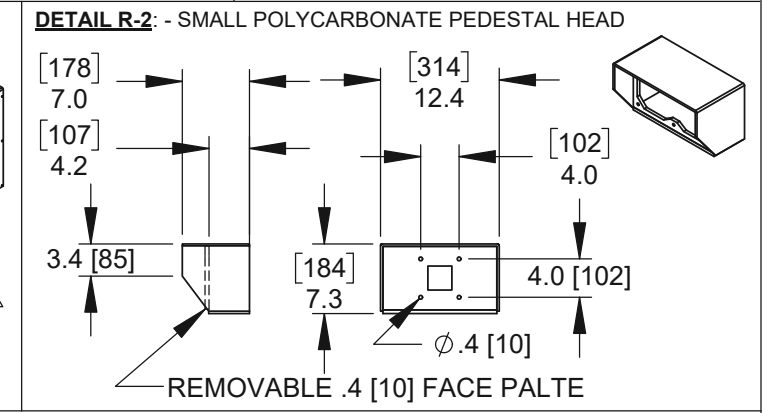
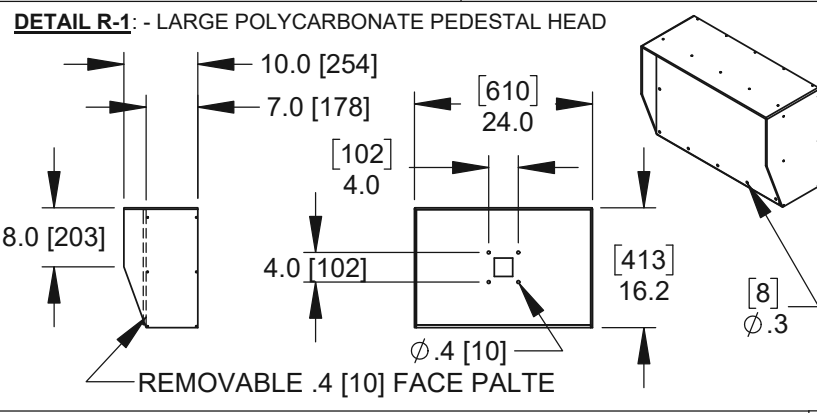
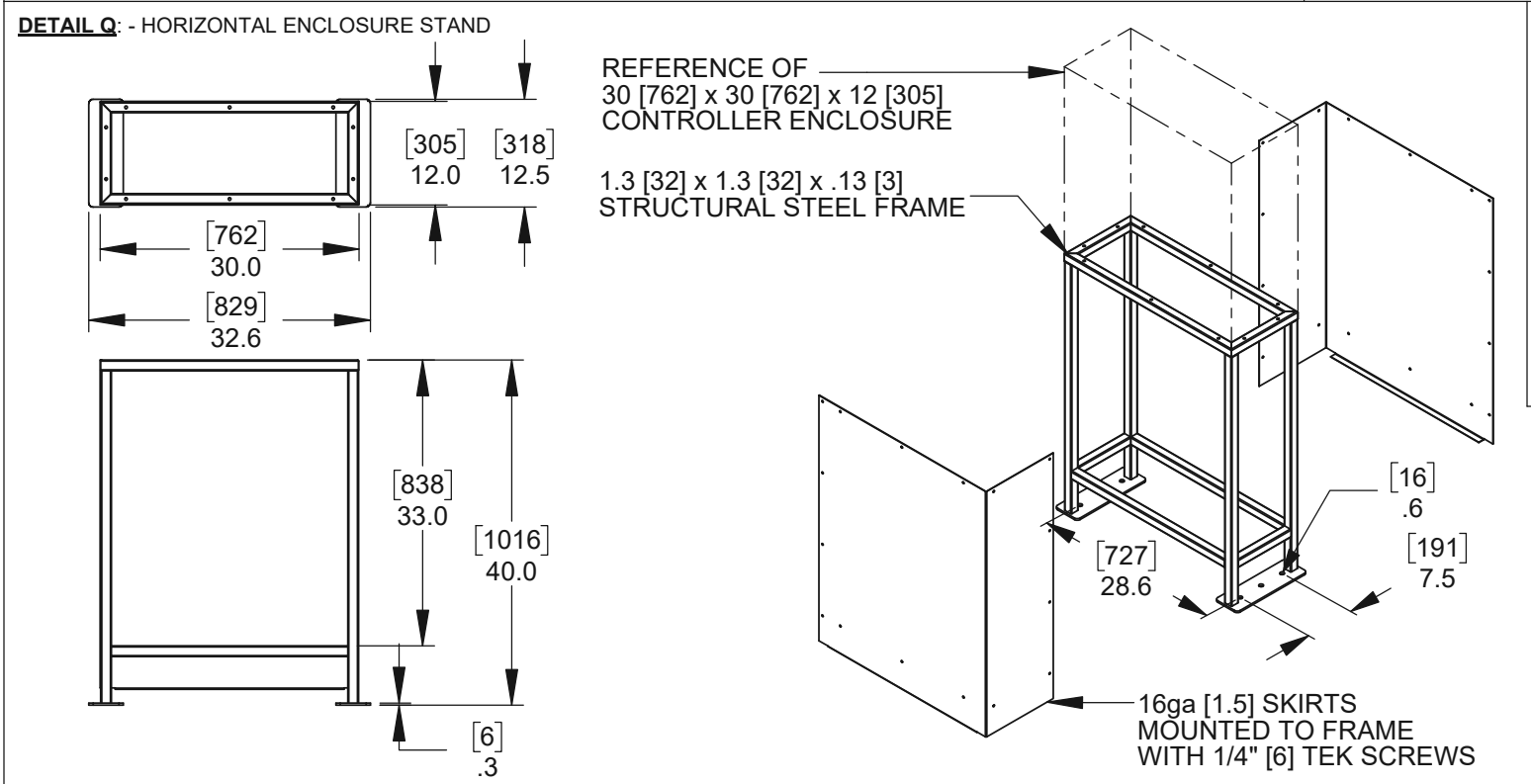
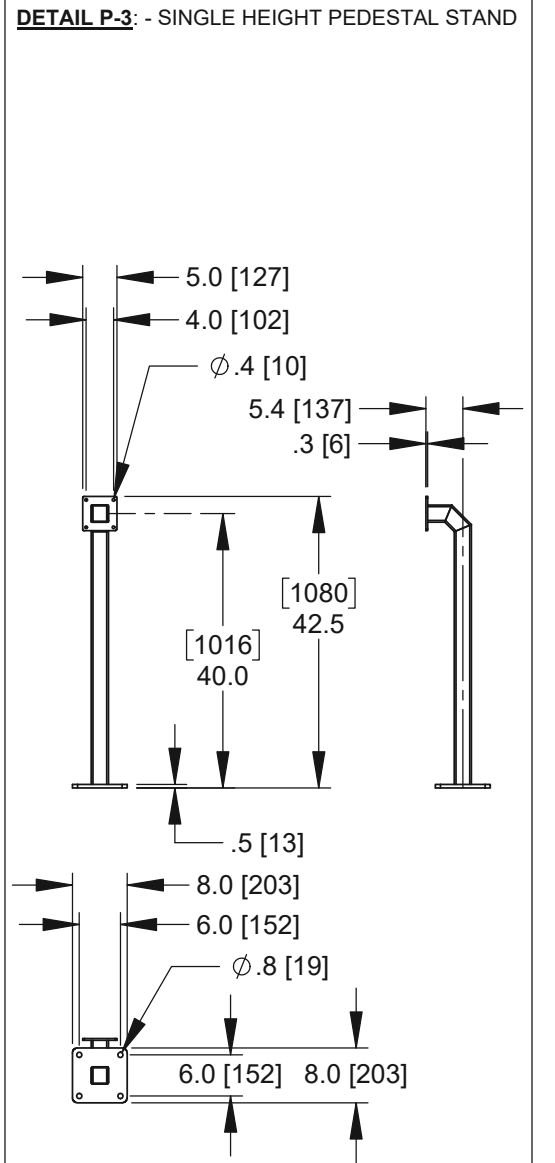
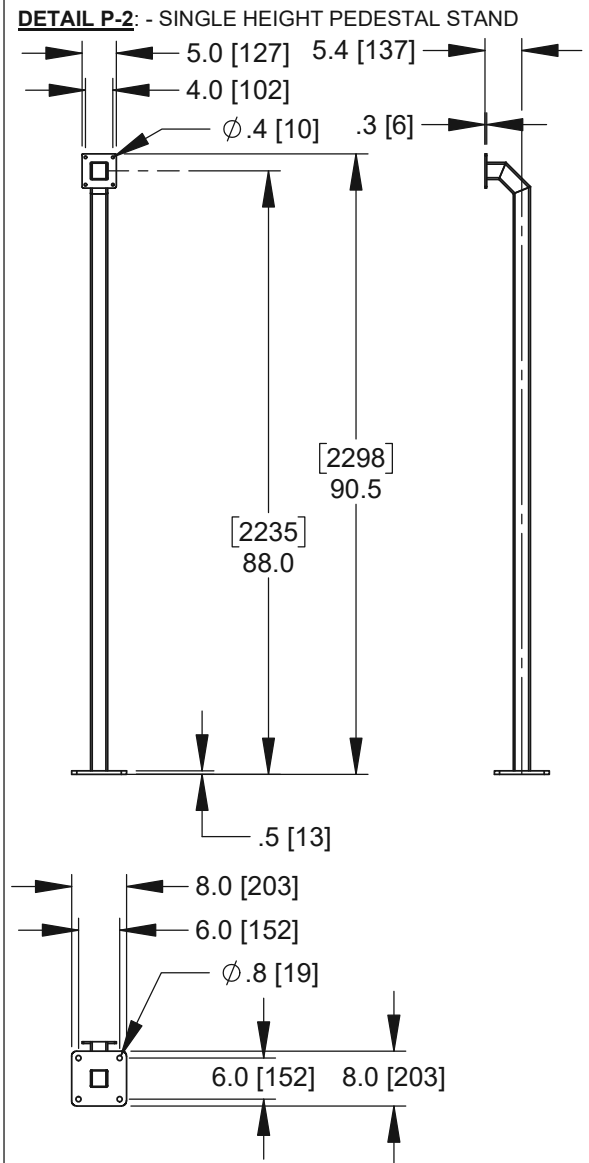
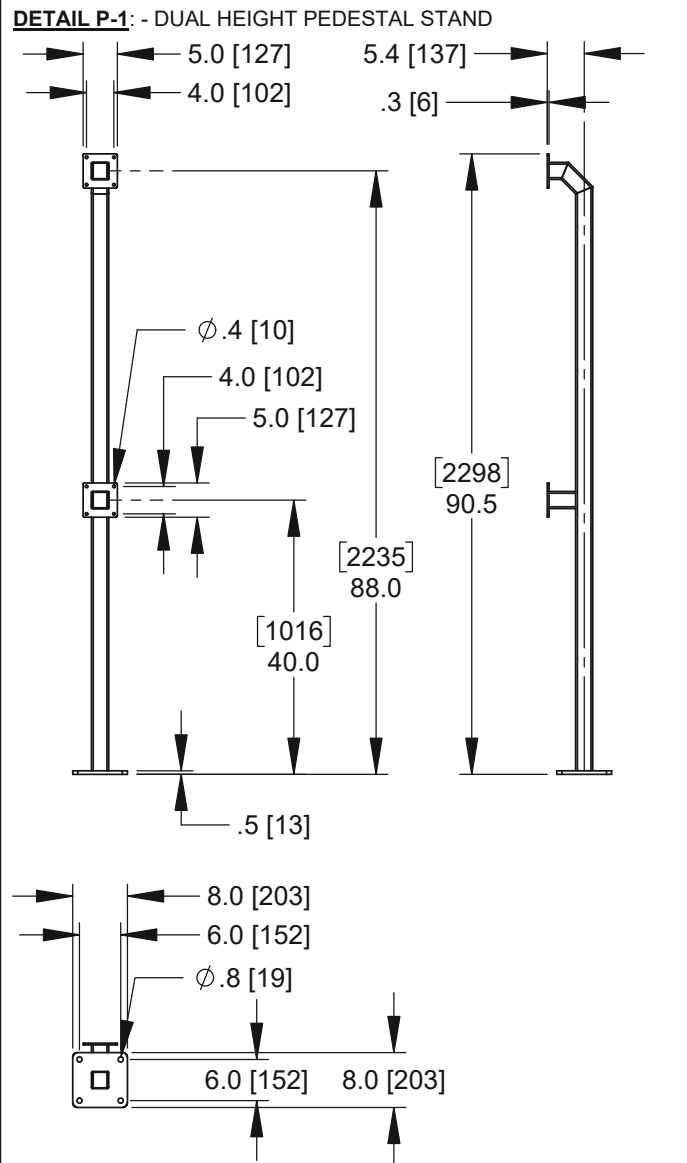
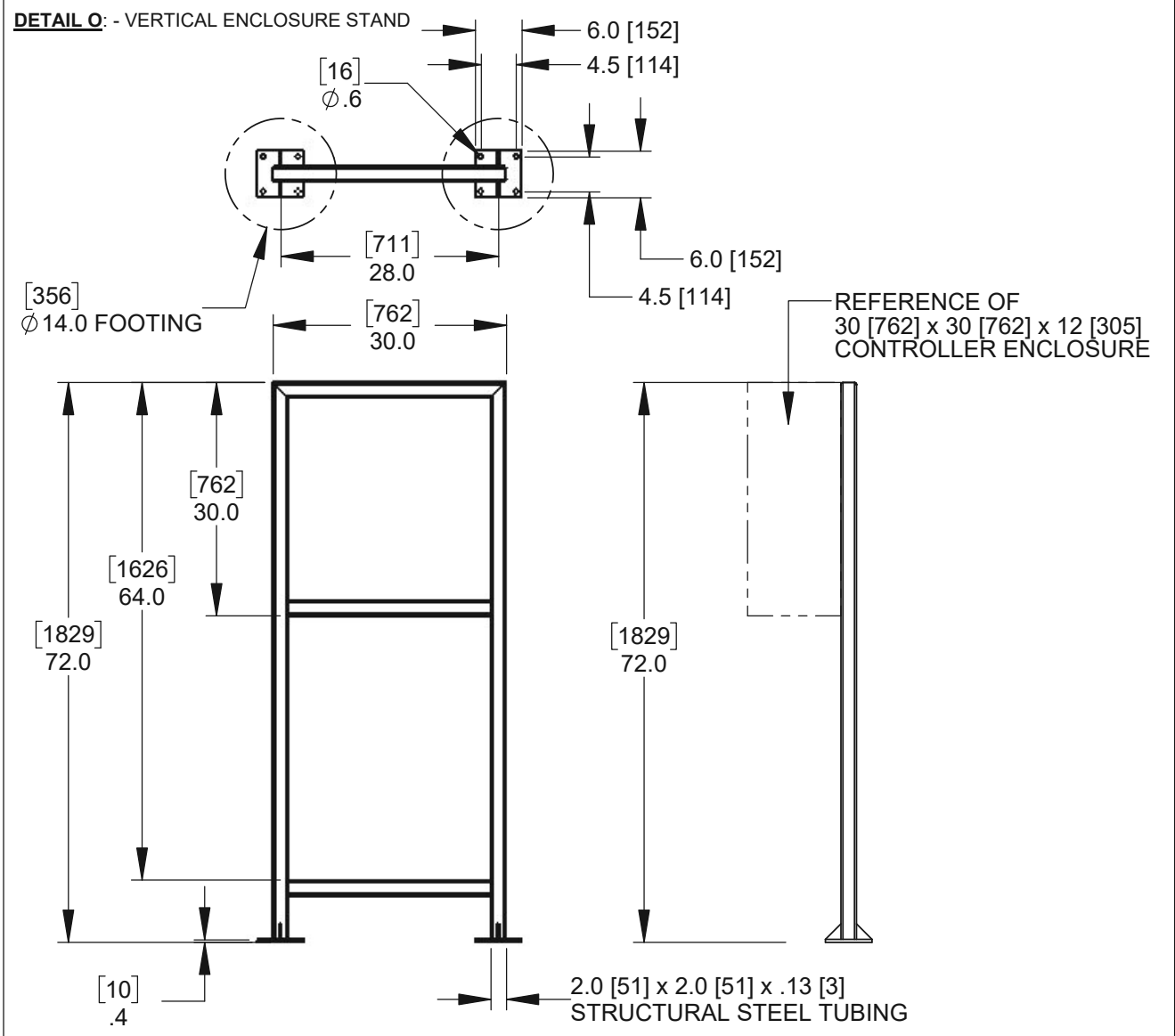
Customer / Project Name:  
 Finish:  
 Drawing No.  
 Rev.

6828 W Melrose St.  
 Boise, ID 83709  
 Phone: 1-800-275-5998  
 Email: info@sloansg.com  
 Web: www.sloansg.com

Date:  
 5/18/2022

Sheet:  
 6 of 7





Description:		<b>BG-2300</b>	
		<b>ELECTRIC BI-FOLDING GATE SYSTEM</b>	
		CONTROLLER ENCLOSURE STANDS	
		PEDESTAL HEADS / PEDESTAL STANDS	
Customer / Project Name:			
Finish:		Date:	
		5/18/2022	
Drawing No.		Rev.	
		<b>A</b>	
		Sheet:	
		7 of 7	

6828 W Melrose St.  
Boise, ID 83709  
Phone: 1-800-275-5998  
Email: info@sloansg.com  
Web: www.sloansg.com