



# Sloan Hydraulic Wedge Barrier (M50/P1)

ITEM: #HW-7050



## PRODUCT FEATURES

### An Active Barrier You Can Rely On.

Sloan's Hydraulic Wedge Barrier is designed and engineered without chains, allowing for better installation, even on slopes. Enjoy this hassle-free, design that has fewer parts to maximize reliability.

- ASTM F2656-07 M50/P1 Certified
- Hydraulic Deployment
- Multiple Barrier Widths (8' - 14.5')
- Hot-Dip Galvanized or Color Coat
- 12" Frame Foundation Depth (14" w/ Drainage)

## PRODUCT BENEFITS

### High-Cycle and Versatile Design.



#### Superior Reliability

Low maintenance and reliability. Get approximately 250,000+ cycles with no parts needing to be replaced.



#### Install on a Slope

Whether it's changes in grade elevation our wedge barrier system will still operate as designed on sloped roadways.



#### Rapid Deployment

Designed for Emergency Fast Operation (EFO) protection. The barrier is capable of deploying in under 1 second.



# Sloan Hydraulic Wedge Barrier (M50/P1)

ITEM: #HW-7050



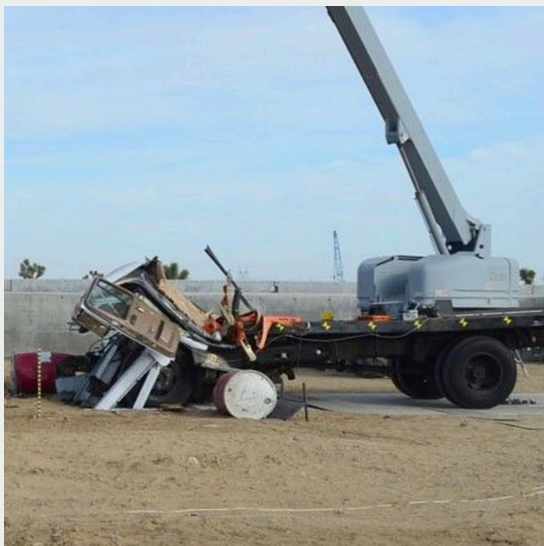
## CERTIFICATIONS

### Crash-Rated

Crash tested and certified by the Department of Defense (DoD) with an ASTM F2656-07 M50/P1 rating (K12).

Capable of halting a 15,000 lb. vehicle traveling at 50 mph in less than 1 meter. Tested and certified at both 8' and 14.5' widths.

### M50/P1 (K12)



## Specifications

Item #	HW-7050
Crash-Rating	ASTM F2656-07 M50/P1
Model	Hydraulic
Finish	Galvanized
Configuration	Shallow Mount
Foundation Depth	12" (14" w/ drainage)
Widths	8ft - 14.5ft
Lighting	Bi-Directional
Warranty	1 year

## Product Options

- Battery Backup
- AC/Fan Unit
- Sump Pump
- Over Speed Detection
- Vehicle Loops
- Barrier Controls/EFO



Download a full list of specs at  
[WWW.SLOANSG.COM/HW-7050](http://WWW.SLOANSG.COM/HW-7050)

