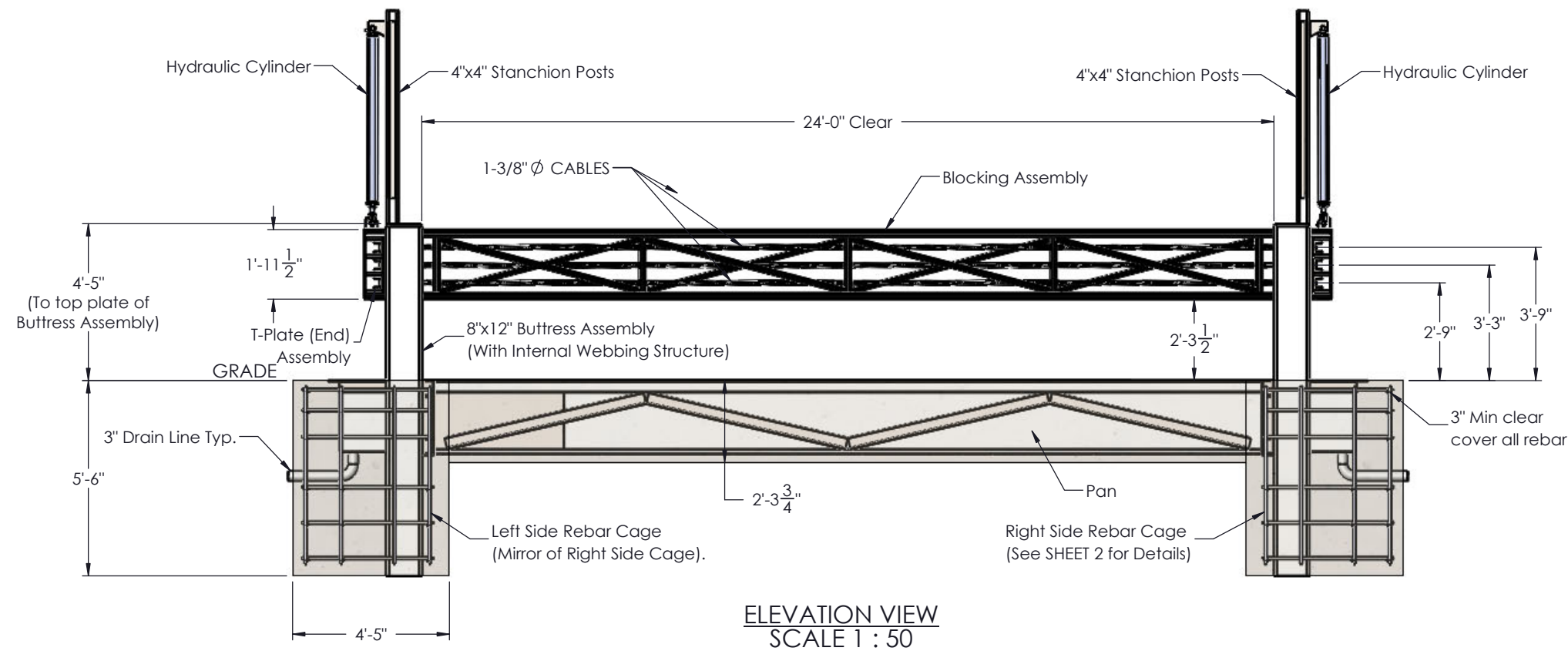



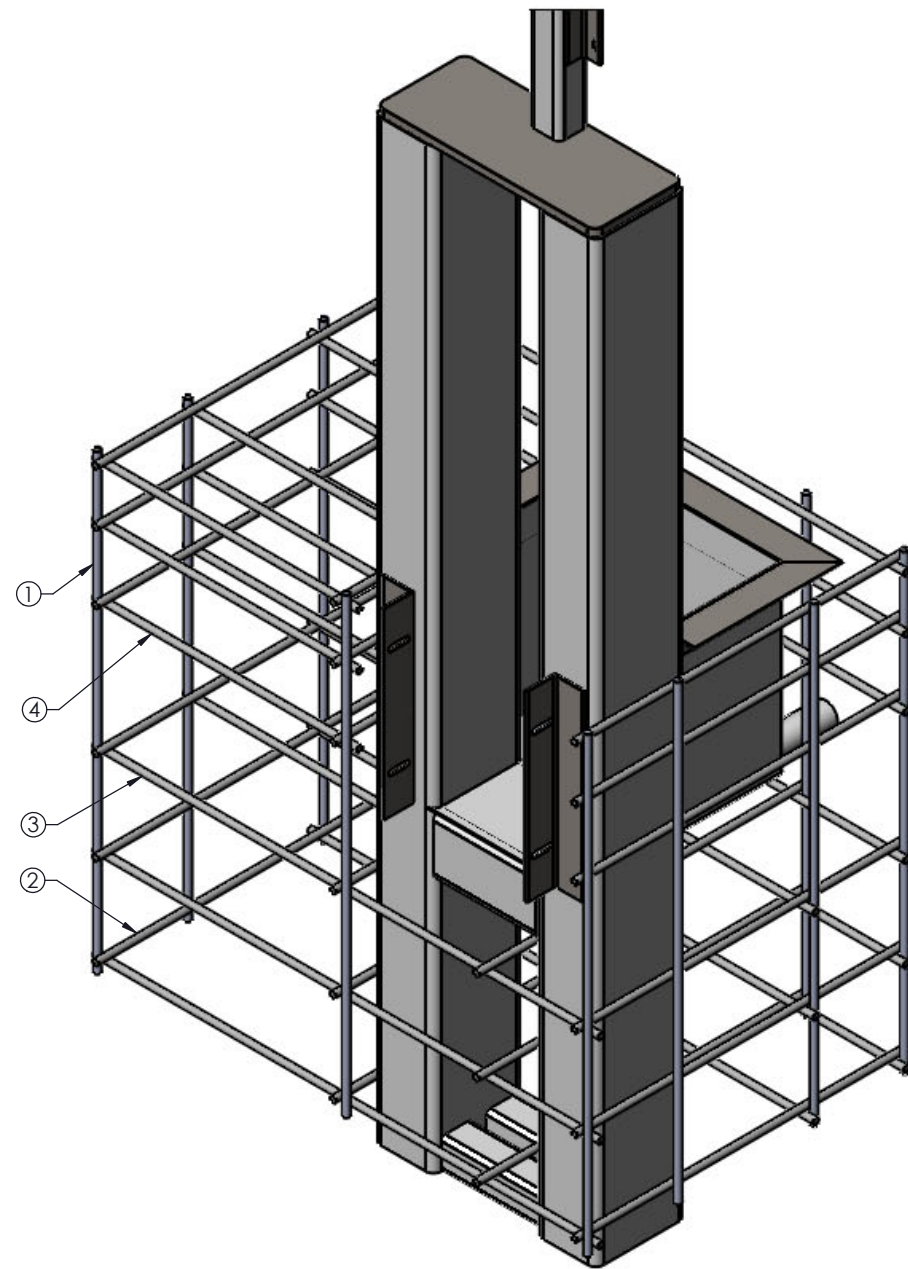
**GENERAL NOTES**

1. Trough galvanized per ASTM A123. All else wet painted per customer specification.
2. All concrete shall be per specification; minimum 3,000 PSI.
3. Foundation reinforced with #6 Grade 60 rebar (See SHEET 2 for rebar cage details).
4. The foundation dimensions shown represent the as-tested configuration for the HR-7050 M50 P1 Rising Beam.
5. All welded joints by welders certified in accordance with AWS D1.1 welding code.
6. The HR-7050 M50 P1 Rising Beam is tested and certified to ASTM F-2656-07 test specifications for a M-50 P1 rating.
7. Barrier has optional Red LED light bar on both sides of barrier to meet UFGS requirements.
8. HR-7050 M50 P1 Rising Beam listed as "K12 Cable Restraint Barrier - 24 ft" on the DOD Anti-Ram Vehicle Barrier List.

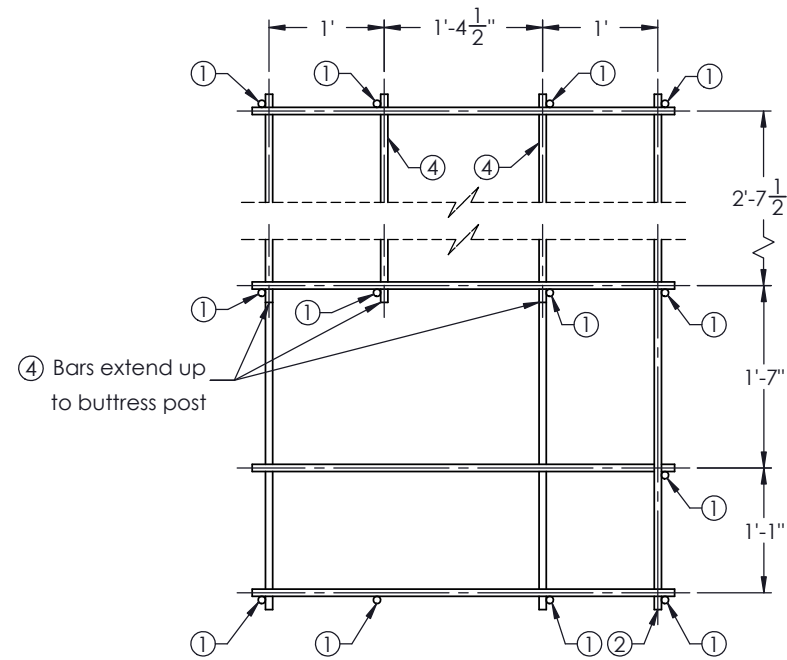


THE DRAWINGS AND INFORMATION CONTAINED HEREIN ARE PROPRIETARY AND CONFIDENTIAL. ALL RIGHTS RESERVED

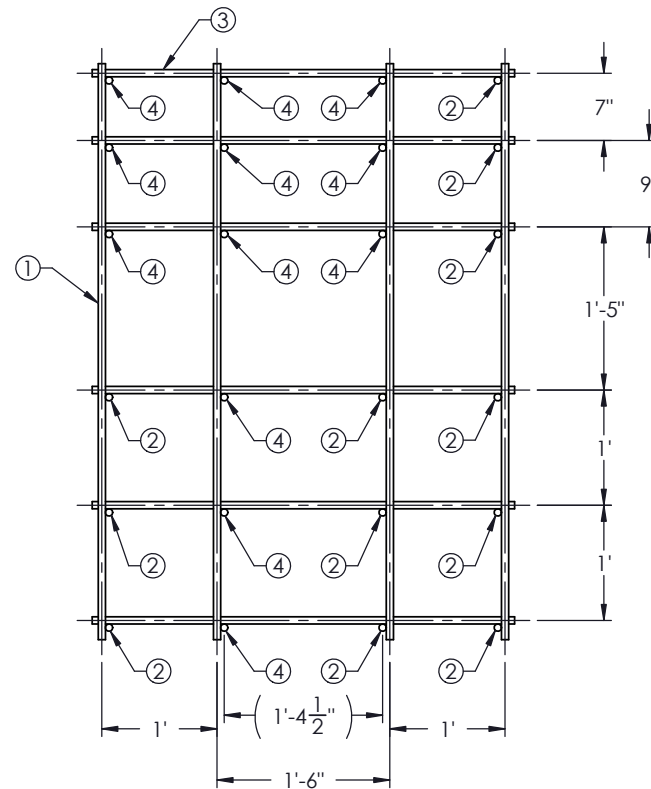
PRODUCT: HR-7050 M50 P1 Rising Beam	DESCRIPTION: HR-7050 24ft Rising Beam Standard Layout
	PROJECT: STANDARD
	SCALE: 1:50



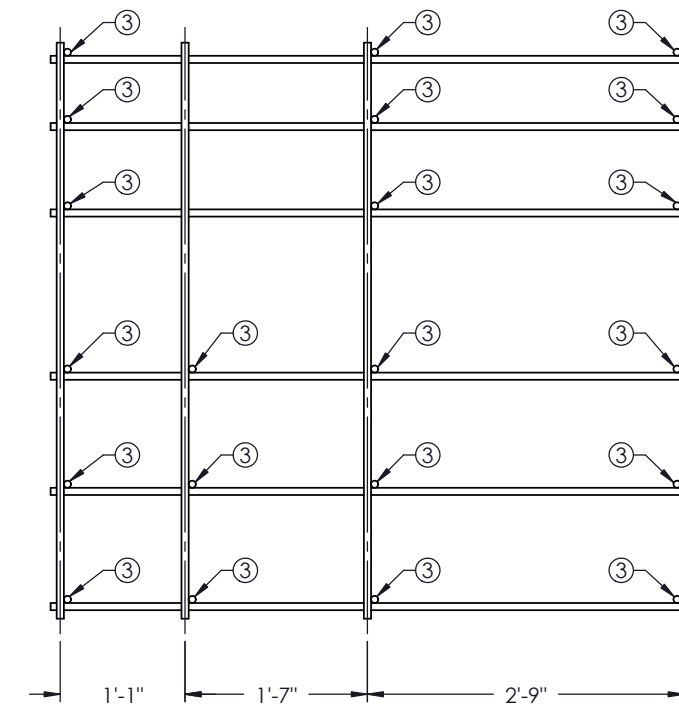
RIGHT SIDE BUTTRESS  
REBAR ARRANGMENT  
SCALE 1 : 18



TOP VIEW  
SCALE 1 : 20



FRONT VIEW  
SCALE 1 : 20



RIGHT SIDE VIEW  
SCALE 1 : 20

HR-7050 Rebar Quantities (Per Buttress)				
ITEM NO.	PartNo	DESCRIPTION	Measure (in)	QTY/Buttress
1	3K-BAR1	5'-0" #6 Vertical Rebar	5'-0"	13
2	3K-BAR2	5'-7" #6 Rebar	5'-7"	12
3	3K-BAR3	3'-8" #6 Rebar	3'-8"	21
4	3K-BAR4	2'-11" #6 Rebar	2'-11"	12

**REBAR NOTES**

- All rebar #6 Grade 60.
- Rebar cage shown on this sheet represents the right side rebar cage.
- Left side cage arrangement is mirrored to fit around buttress assembly as shown in RIGHT SIDE BUTTRESS REBAR ARRANGMENT view.

THE DRAWINGS AND INFORMATION CONTAINED HEREIN ARE  
PROPRIETARY AND CONFIDENTIAL.  
ALL RIGHTS RESERVED

PRODUCT: HR-7050 M50 P1 Vertical Lift Barrier	DESCRIPTION: HR-7050 24ft Vertical Barrier Rebar Details
PROJECT: STANDARD	
SCALE: Varies	



