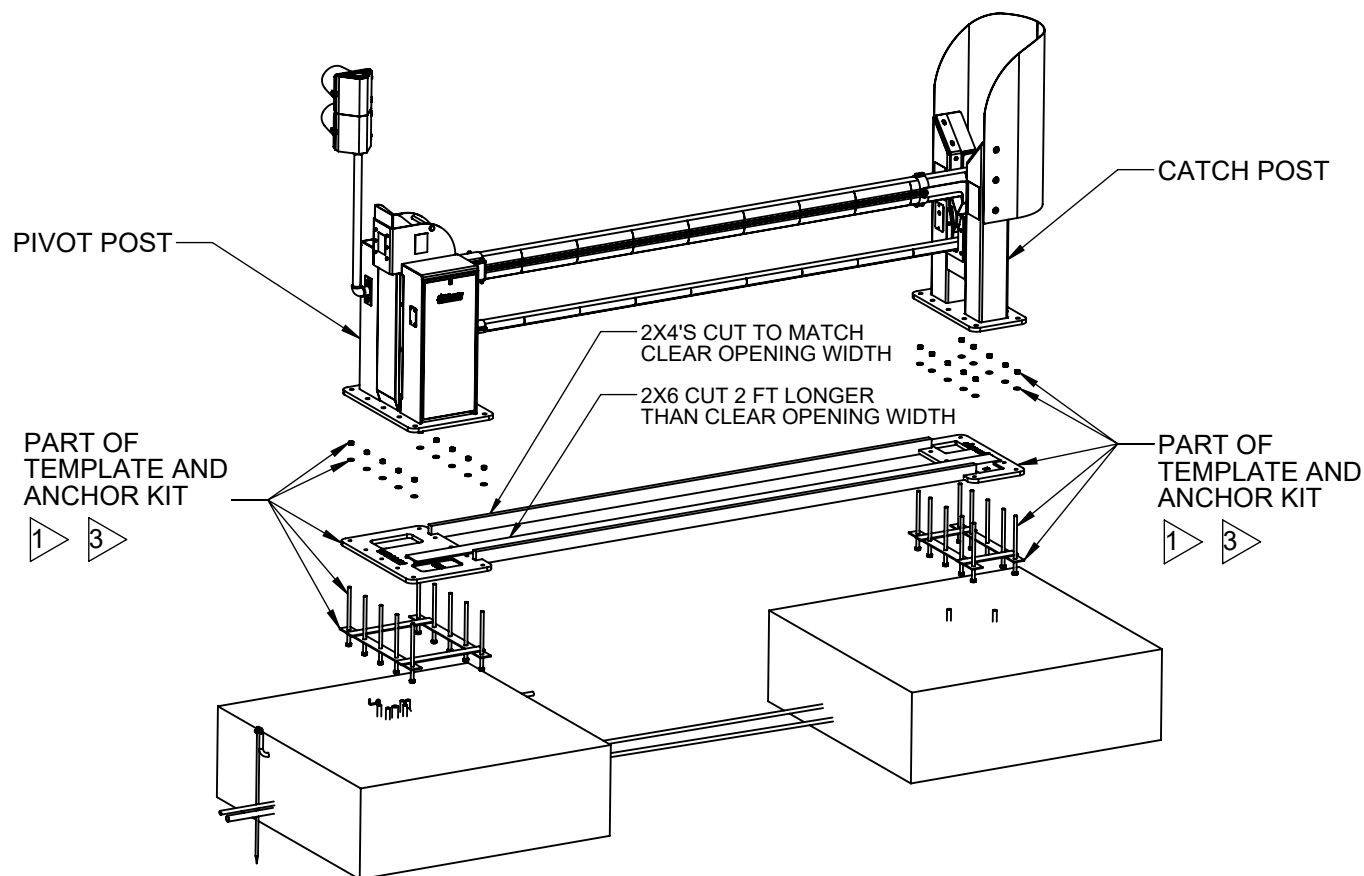


LTR	DESCRIPTION	DATE	APPRV'D
L	REVISED BOLT CNTR TO CNTR DIM FOR 22' CLEAR OPEN PER SALES REQUEST - SHTS 2 , 4 & 6.	1/15/2021	RAW



- 1 M30 COMPONENT PARTS: ONLY USE THE HARDWARE PROVIDED
DO NOT SUBSTITUTE WITH OTHER MANUFACTURED PARTS.
 - STANDARD AND DEEP FOUNDATION USE KIT P/N MX002557.
 - 12" (SHALLOW) FOUNDATION USES KIT P/N MX4500.
- 2 TORQUE TO 200 FT-LBS.
- 3 WOOD PARTS: TEMPLATE, 2X4 AND 2X6 ARE REMOVED AFTER CONCRETE HAS ADEQUATELY HARDENED.

NOTE: DRAWING IS NOT TO SCALE.



DOCUMENT TITLE

HD-8030 INSTALL
SPECIFICATION

DRAWN
DY

DATE
4/8/2011

CHECKED

DATE

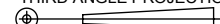
APPROVED

DATE

DOCUMENT NUMBER:

D0426

THIRD ANGLE PROJECTION

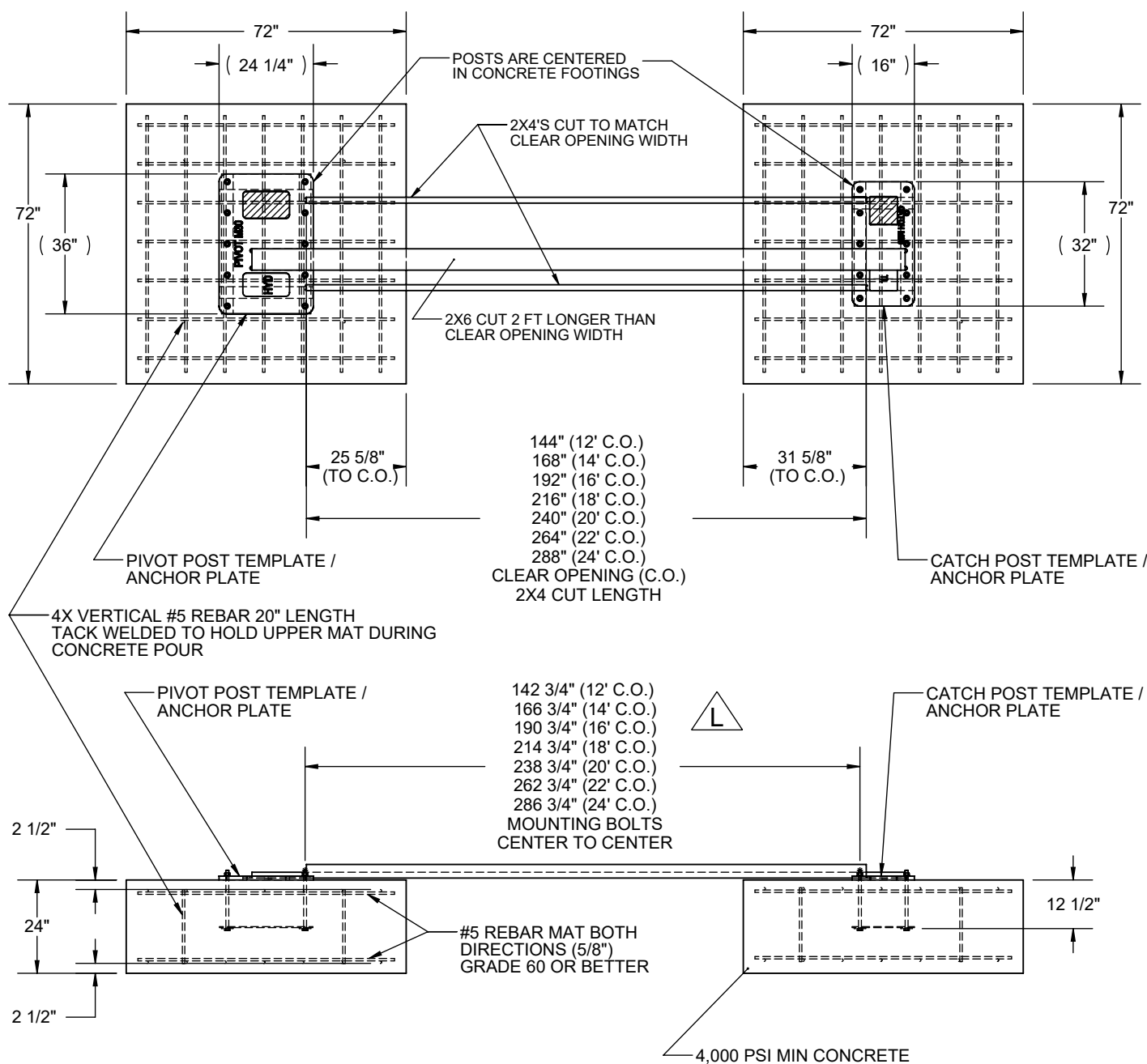


REV

L

SHT 1 OF 16

LTR	DESCRIPTION	DATE	APPRV'D
L	REVISED BOLT CNTR TO CNTR DIM FOR 22' CLEAR OPEN PER SALES REQUEST - SHTS 2 , 4 & 6.	1/15/2021	RAW



STANDARD FOUNDATION - 12FT CLEAR OPENING SHOWN

- DIMENSIONS ARE IN INCHES UNLESS OTHERWISE NOTED.
- PIVOT AND CATCH POST BOLT PATTERNS ARE DIFFERENT, BUT CONCRETE FOOTINGS AND REBAR MATS ARE IDENTICAL IN SIZE.
- TEMPLATES, ALLOY STEEL ANCHOR BOLTS, EMBEDDED ANCHOR PLATES, NUTS AND WASHERS ARE SUPPLIED BY SLOAN SECURITY GROUP. STANDARD FOUNDATION USES KIT MX002557.
- REBAR, CONDUIT, 2X4, 2X6, AND CONCRETE MUST BE SUPPLIED BY THE INSTALLER.

NOTE: DRAWING IS NOT TO SCALE.



DOCUMENT TITLE

**HD-8030 INSTALL
SPECIFICATION**

DRAWN
DY

DATE
4/8/2011

CHECKED

DATE

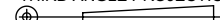
APPROVED

DATE

DOCUMENT NUMBER:

D0426

THIRD ANGLE PROJECTION

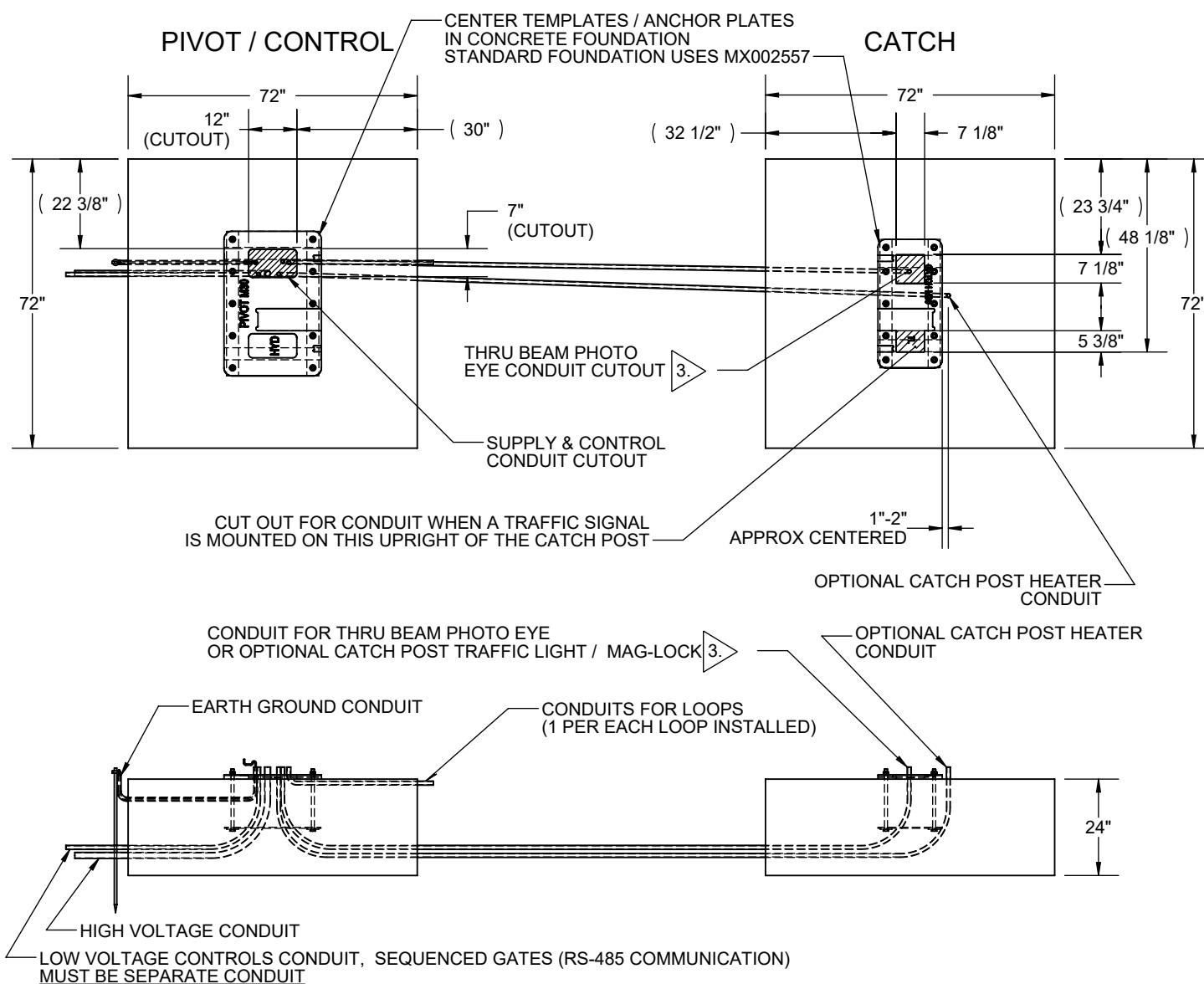


REV

L

SHT 2 OF 16

LTR	DESCRIPTION	DATE	APPR'D
L	REVISED BOLT CNTR TO CNTR DIM FOR 22' CLEAR OPEN PER SALES REQUEST - SHTS 2 , 4 & 6.	1/15/2021	RAW



STANDARD FOUNDATION - 12FT CLEAR OPENING SHOWN

1. DIMENSIONS ARE IN INCHES UNLESS OTHERWISE NOTED.
2. REBAR NOT SHOWN.

3. NECESSARY IF USING THRU BEAM PHOTO EYE, UNLESS OPTIONAL BATTERY POWERED EYE IS USED.

NOTE: DRAWING IS NOT TO SCALE.



DOCUMENT TITLE

HD-8030 INSTALL
SPECIFICATION

DRAWN
DY

DATE
4/8/2011

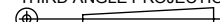
CHECKED
DATE

APPROVED
DATE

DOCUMENT NUMBER:

D0426

THIRD ANGLE PROJECTION

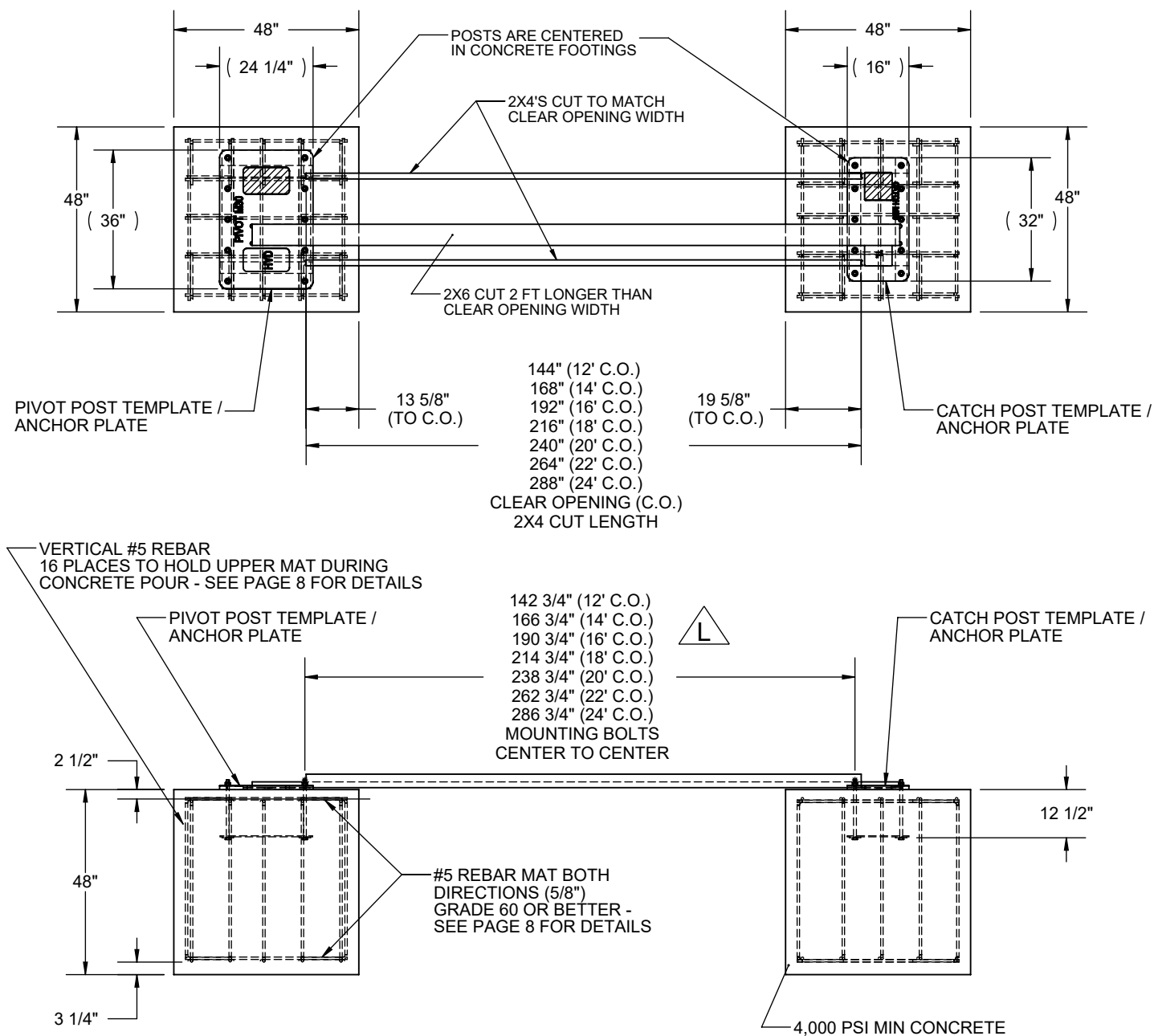


REV

L

SHT 3 OF 16

LTR	DESCRIPTION	DATE	APPRV'D
L	REVISED BOLT CNTR TO CNTR DIM FOR 22' CLEAR OPEN PER SALES REQUEST - SHTS 2 , 4 & 6.	1/15/2021	RAW



DEEP FOUNDATION - 12FT CLEAR OPENING SHOWN

1. DIMENSIONS ARE IN INCHES UNLESS OTHERWISE NOTED.
2. PIVOT AND CATCH POST BOLT PATTERNS ARE DIFFERENT, BUT CONCRETE FOOTINGS AND REBAR MATS ARE IDENTICAL IN SIZE.
3. TEMPLATES, ALLOY STEEL ANCHOR BOLTS, EMBEDDED ANCHOR PLATES, NUTS AND WASHERS ARE SUPPLIED BY SLOAN SECURITY GROUP. DEEP FOUNDATION USES KIT MX002557.
4. REBAR, CONDUIT, 2X4, 2X6, AND CONCRETE MUST BE SUPPLIED BY THE INSTALLER.

NOTE: DRAWING IS NOT TO SCALE.



DOCUMENT TITLE

**HD-8030 INSTALL
SPECIFICATION**

DRAWN
DY

DATE
4/8/2011

CHECKED

DATE

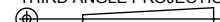
APPROVED

DATE

DOCUMENT NUMBER:

D0426

THIRD ANGLE PROJECTION

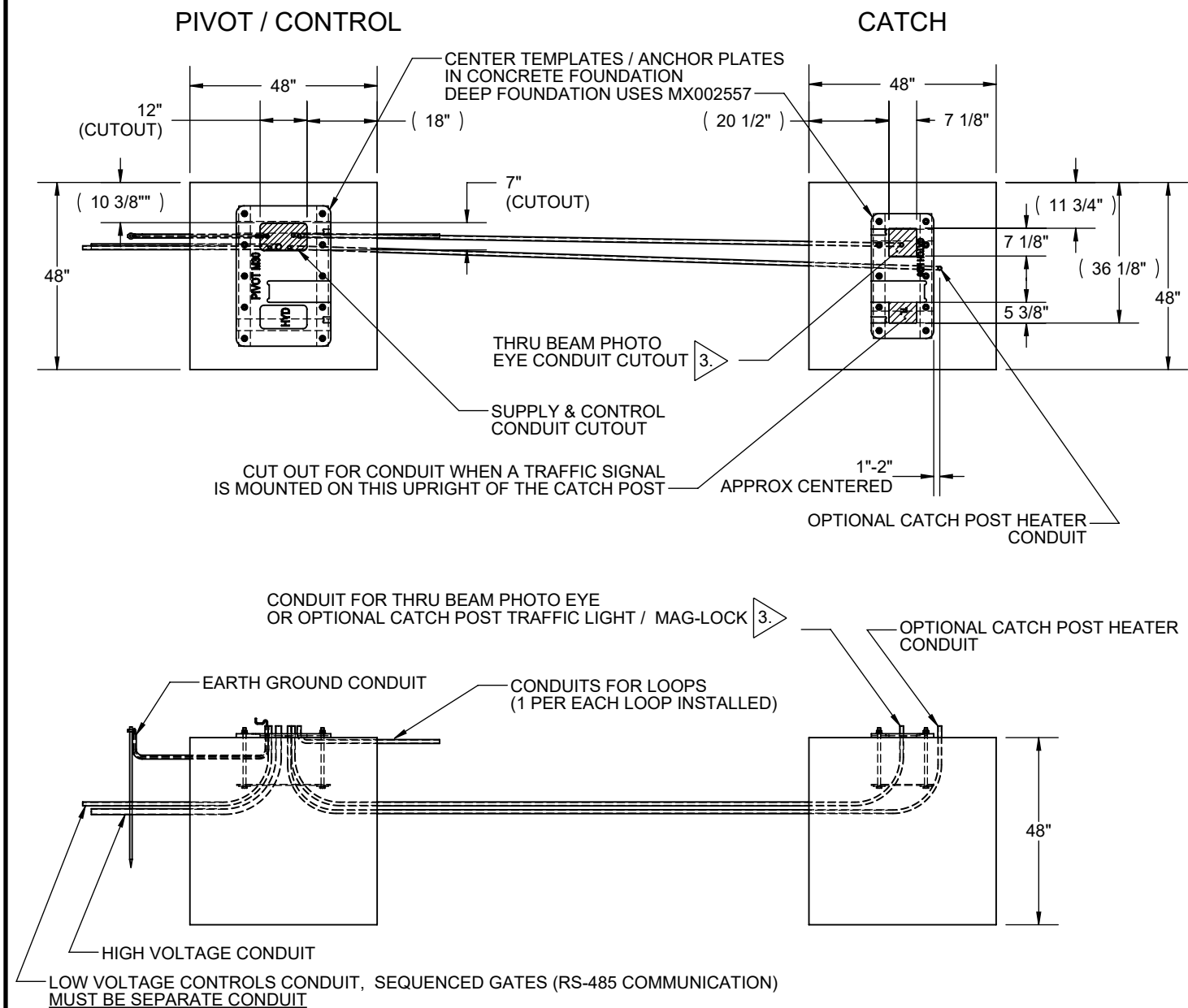


REV

L

SHT 4 OF 16

LTR	DESCRIPTION	DATE	APPRV'D
L	REVISED BOLT CNTR TO CNTR DIM FOR 22' CLEAR OPEN PER SALES REQUEST - SHTS 2 , 4 & 6.	1/15/2021	RAW



DEEP FOUNDATION - 12FT CLEAR OPENING SHOWN

1. DIMENSIONS ARE IN INCHES UNLESS OTHERWISE NOTED.
2. REBAR NOT SHOWN.

3. NECESSARY IF USING THRU BEAM PHOTO EYE, UNLESS OPTIONAL BATTERY POWERED EYE IS USED.

NOTE: DRAWING IS NOT TO SCALE.



DOCUMENT TITLE

**HD-8030 INSTALL
SPECIFICATION**

DRAWN
DY

DATE
4/8/2011

CHECKED

DATE

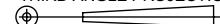
APPROVED

DATE

DOCUMENT NUMBER:

D0426

THIRD ANGLE PROJECTION

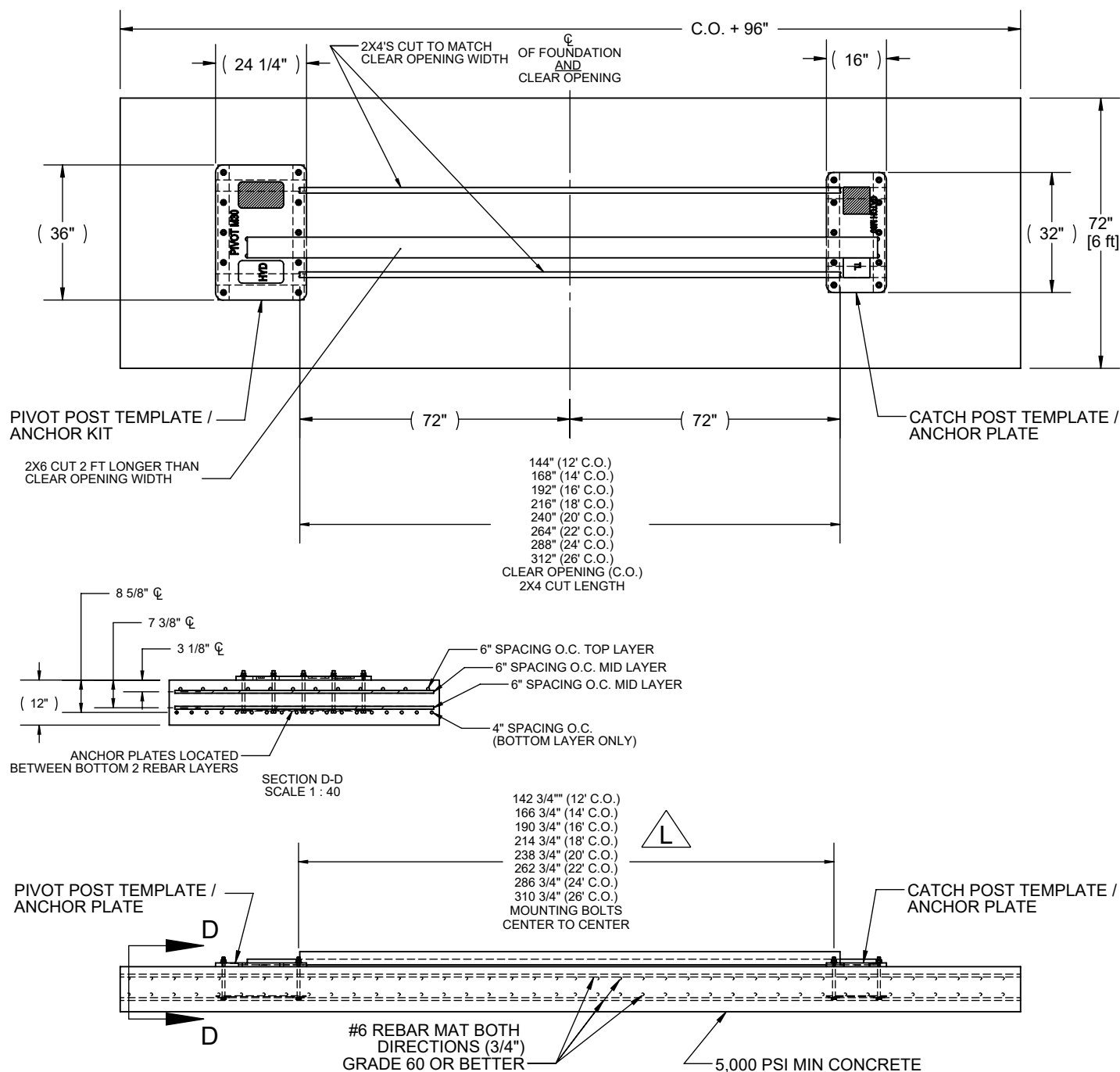


REV

L

SHT 5 OF 16

LTR	DESCRIPTION	DATE	APPRV'D
L	REVISED BOLT CNTR TO CNTR DIM FOR 22' CLEAR OPEN PER SALES REQUEST - SHTS 2 , 4 & 6.	1/15/2021	RAW



SHALLOW FOUNDATION - 12FT CLEAR OPENING SHOWN

- DIMENSIONS ARE IN INCHES UNLESS OTHERWISE NOTED.
- PIVOT AND CATCH POST BOLT PATTERNS ARE DIFFERENT.
- TEMPLATES, ALLOY STEEL ANCHOR BOLTS, EMBEDDED ANCHOR PLATES, NUTS AND WASHERS ARE SUPPLIED BY SLOAN SECURITY GROUP. 12" FOUNDATION USES KIT MX4500.
- REBAR, CONDUIT, 2X4, 2X6, AND CONCRETE MUST BE SUPPLIED BY THE INSTALLER.

NOTE: DRAWING IS NOT TO SCALE.



DOCUMENT TITLE

HD-8030 INSTALL
SPECIFICATION

DRAWN
DY

DATE
4/8/2011

CHECKED

DATE

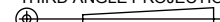
APPROVED

DATE

DOCUMENT NUMBER:

D0426

THIRD ANGLE PROJECTION

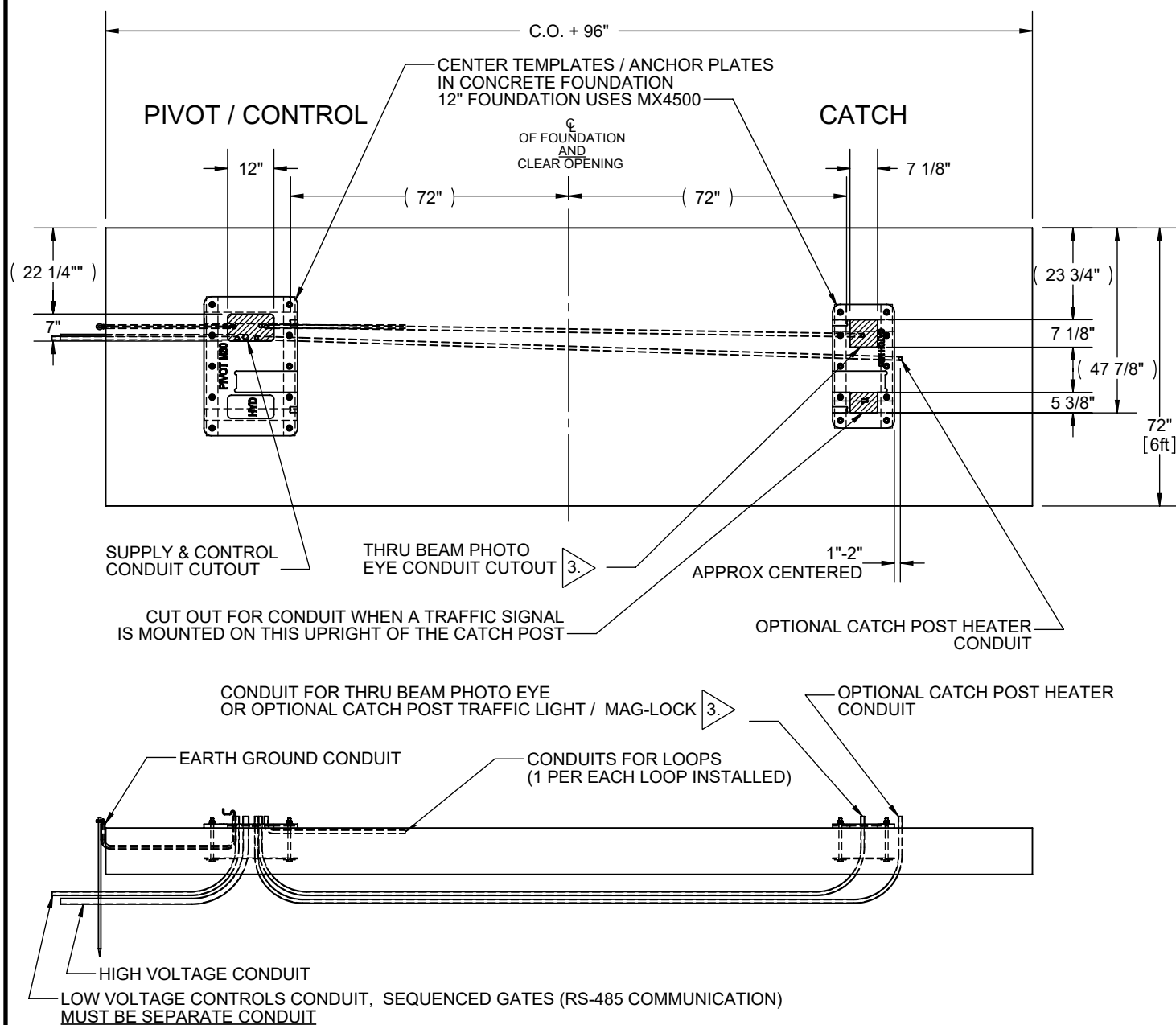


REV

L

SHT 6 OF 16

LTR	DESCRIPTION	DATE	APPRV'D
L	REVISED BOLT CNTR TO CNTR DIM FOR 22' CLEAR OPEN PER SALES REQUEST - SHTS 2 , 4 & 6.	1/15/2021	RAW



SHALLOW FOUNDATION - 12FT CLEAR OPENING SHOWN

- DIMENSIONS ARE IN INCHES UNLESS OTHERWISE NOTED.
- REBAR NOT SHOWN.
- NECESSARY IF USING THRU BEAM PHOTO EYE, UNLESS OPTIONAL BATTERY POWERED EYE IS USED.

NOTE: DRAWING IS NOT TO SCALE.



DOCUMENT TITLE

**HD-8030 INSTALL
SPECIFICATION**

DRAWN
DY

DATE
4/8/2011

CHECKED

DATE

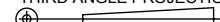
APPROVED

DATE

DOCUMENT NUMBER:

D0426

THIRD ANGLE PROJECTION

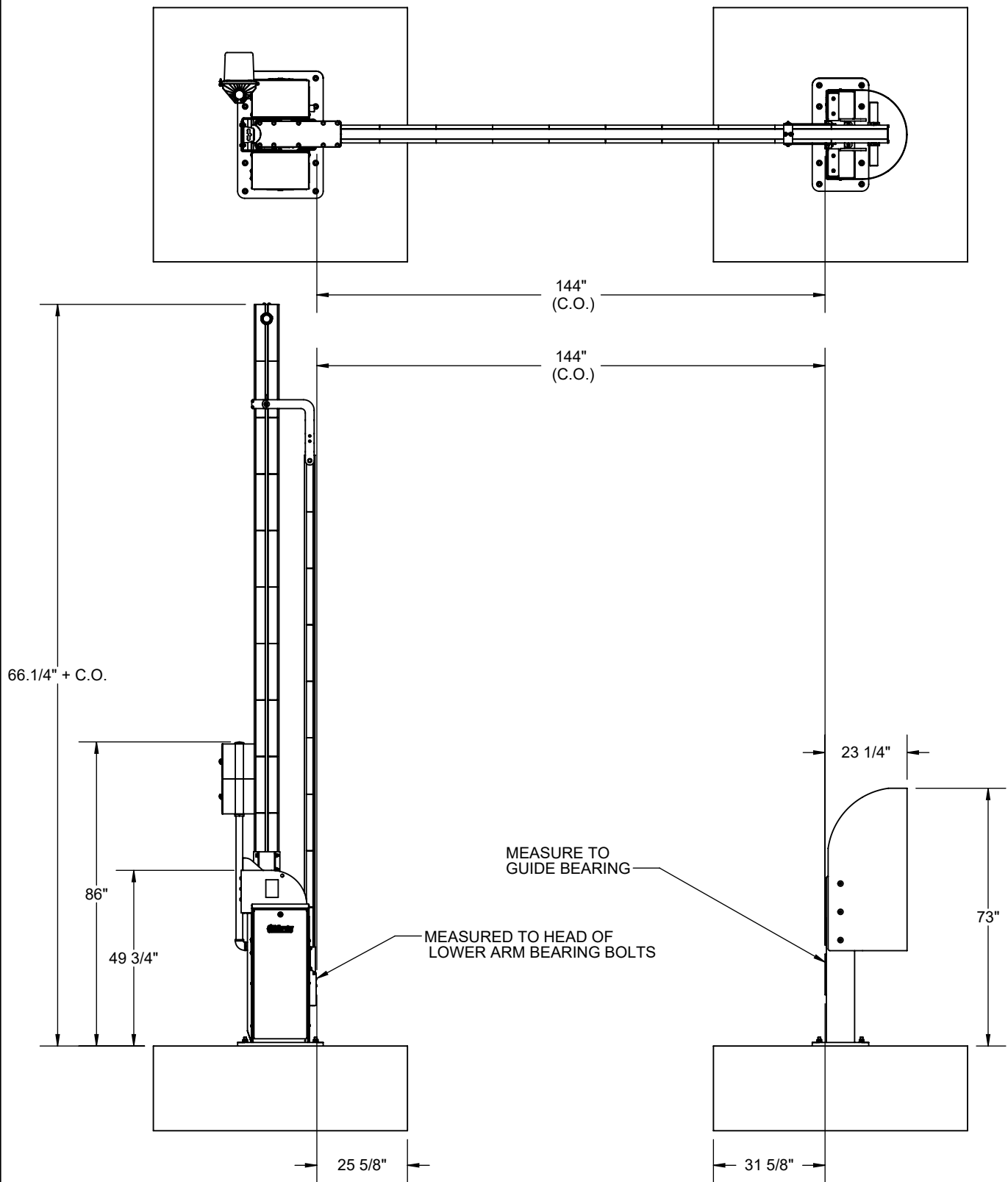


REV

L

SHT 7 OF 16

LTR	DESCRIPTION	DATE	APPRV'D
L	REVISED BOLT CNTR TO CNTR DIM FOR 22' CLEAR OPEN PER SALES REQUEST - SHTS 2 , 4 & 6.	1/15/2021	RAW



DIMENSIONS SHOWN FOR 12' CLEAR OPENING EXAMPLE

NOTE: DRAWING IS NOT TO SCALE.



DOCUMENT TITLE

**HD-8030 INSTALL
SPECIFICATION**

DRAWN
DY

DATE
4/8/2011

CHECKED

DATE

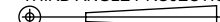
APPROVED

DATE

DOCUMENT NUMBER:

D0426

THIRD ANGLE PROJECTION



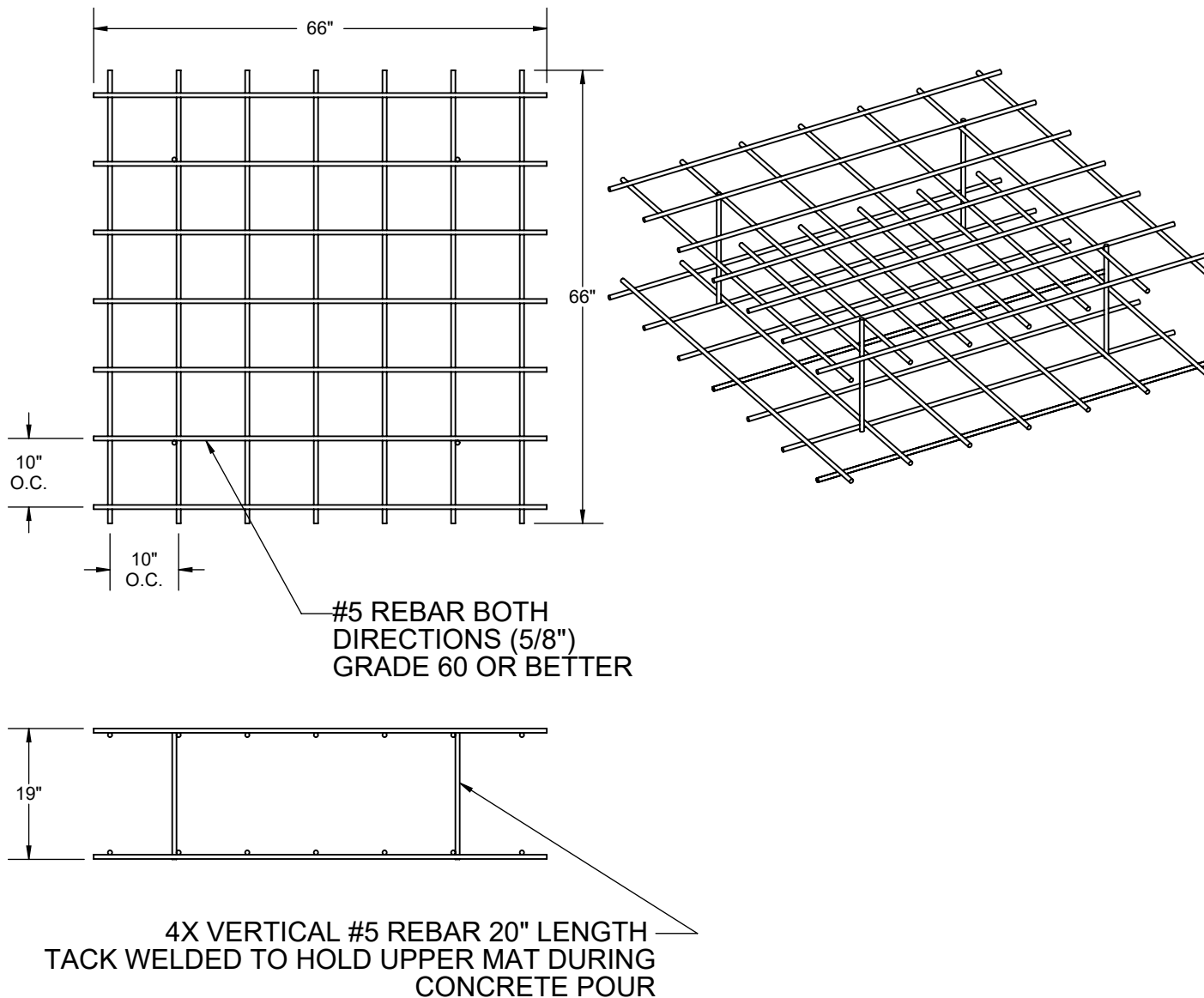
REV

L

SHT 8 OF 16

LTR	DESCRIPTION	DATE	APPRV'D
L	REVISED BOLT CNTR TO CNTR DIM FOR 22' CLEAR OPEN PER SALES REQUEST - SHTS 2 , 4 & 6.	1/15/2021	RAW

REBAR CAGE FOR 72" X 72" X 24" FOOTING



1. DIMENSIONS ARE IN INCHES UNLESS OTHERWISE NOTED.
2. DESIGN SHOWN IS FOR A CONCRETE FOOTING 72 X 72 X 24. REBAR TO BE SPACED 2" FROM THE TOP OF CONCRETE FOOTING AND 3" FROM THE BOTTOM.
3. REBAR AND FOOTINGS ARE IDENTICAL FOR PIVOT AND CATCH SIDES (PIVOT AND CATCH POST HAVE DIFFERENT BOLT PATTERNS).

NOTE: DRAWING IS NOT TO SCALE.



DOCUMENT TITLE

**HD-8030 INSTALL
SPECIFICATION**

DRAWN
DY

DATE
4/8/2011

CHECKED

DATE

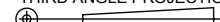
APPROVED

DATE

DOCUMENT NUMBER:

D0426

THIRD ANGLE PROJECTION



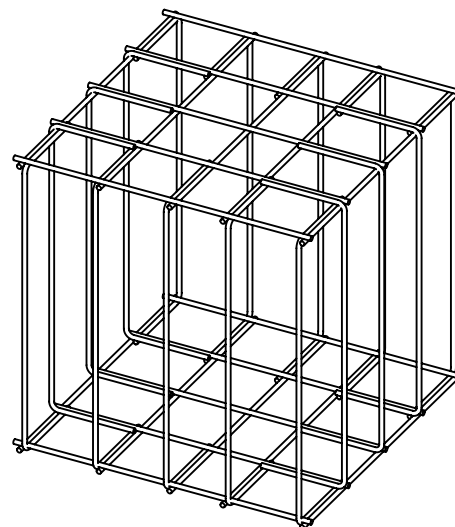
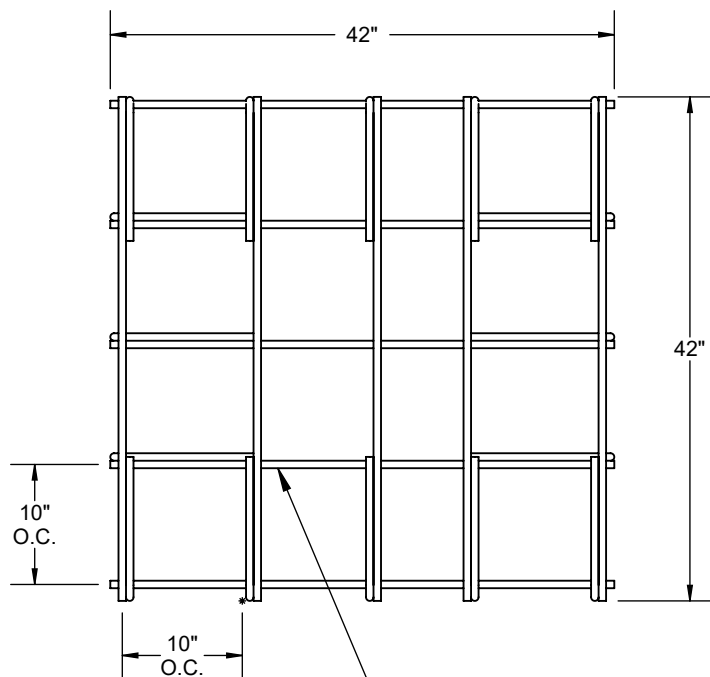
REV

L

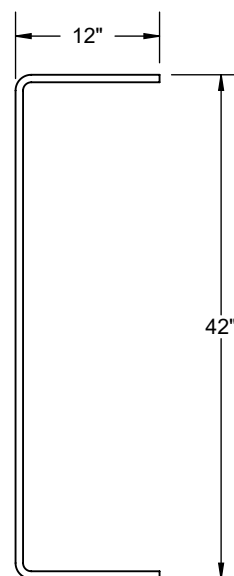
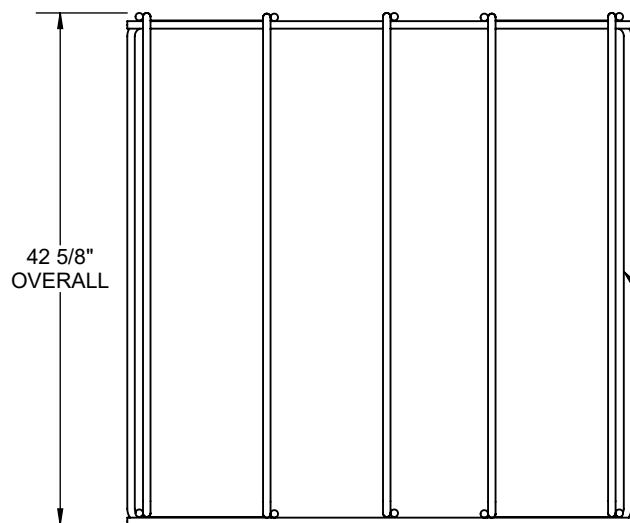
SHT 9 OF 16

LTR	DESCRIPTION	DATE	APPRV'D
L	REVISED BOLT CNTR TO CNTR DIM FOR 22' CLEAR OPEN PER SALES REQUEST - SHTS 2 , 4 & 6.	1/15/2021	RAW

REBAR CAGE FOR 48" X 48" X 48" FOOTING



#5 REBAR BOTH DIRECTIONS (5/8")
GRADE 60 OR BETTER



16 VERTICAL #5 REBAR
GRADE 60 OR BETTER
BENT AS SHOWN

1. DIMENSIONS ARE IN INCHES UNLESS OTHERWISE NOTED.
2. DESIGN SHOWN IS FOR A CONCRETE FOOTING 48" X 48" X 48" MIN. REBAR TO BE SPACED 2" FROM TOP OF CONCRETE FOOTING AND 3" FROM THE BOTTOM.
3. REBAR AND FOOTING ARE IDENTICAL FOR PIVOT AND CATCH SIDES (PIVOT AND CATCH POST HAVE DIFFERENT BOLT PATTERNS).

NOTE: DRAWING IS NOT TO SCALE.



DOCUMENT TITLE

**HD-8030 INSTALL
SPECIFICATION**

DRAWN
DY

DATE
4/8/2011

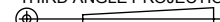
CHECKED
DATE

APPROVED
DATE

DOCUMENT NUMBER:

D0426

THIRD ANGLE PROJECTION



REV

L

SHT OF
10 16

